
Shape-Out 2 Documentation

Release 2.16.0

Paul Müller and Christoph Herold

Apr 04, 2024

CONTENTS

1	Getting started	3
1.1	Installation	3
1.2	Update	3
1.3	Supported data file formats	3
1.4	How to cite	4
2	RT-DC Basics	5
2.1	Working Principle	5
2.2	Measured Features	6
3	User Interface	11
3.1	Terminology	11
3.2	Basic usage	12
4	Quick Guides	21
4.1	Checking experimental data for consistency	21
4.2	Excluding invalid events	22
4.3	Accessing DCOR data	24
4.4	Young's Modulus	25
4.5	Statistical significance testing (R and lme4)	26
4.6	Loading Extensions (machine-learning and plugin features)	35
4.7	Export DC data	36
4.8	Export statistical data	38
5	Changelog	41
5.1	version 2.16.0	41
5.2	version 2.15.5	41
5.3	version 2.15.4	41
5.4	version 2.15.3	42
5.5	version 2.15.2	42
5.6	version 2.15.1	42
5.7	version 2.15.0	42
5.8	version 2.14.3	42
5.9	version 2.14.2	42
5.10	version 2.14.1	43
5.11	version 2.14.0	43
5.12	version 2.13.7	43
5.13	version 2.13.6	43
5.14	version 2.13.5	43
5.15	version 2.13.4	44

5.16	version 2.13.3	44
5.17	version 2.13.2	44
5.18	version 2.13.1	44
5.19	version 2.13.0	44
5.20	version 2.12.0	44
5.21	version 2.11.11	45
5.22	version 2.11.10	45
5.23	version 2.11.9	45
5.24	version 2.11.8	45
5.25	version 2.11.7	45
5.26	version 2.11.6	45
5.27	version 2.11.5	45
5.28	version 2.11.4	46
5.29	version 2.11.3	46
5.30	version 2.11.2	46
5.31	version 2.11.1	46
5.32	version 2.11.0	46
5.33	version 2.10.0	46
5.34	version 2.9.6	47
5.35	version 2.9.5	47
5.36	version 2.9.4	47
5.37	version 2.9.3	47
5.38	version 2.9.2	47
5.39	version 2.9.1	48
5.40	version 2.9.0	48
5.41	version 2.8.1	48
5.42	version 2.8.0	48
5.43	version 2.7.4	48
5.44	version 2.7.3	49
5.45	version 2.7.2	49
5.46	version 2.7.1	49
5.47	version 2.7.0	49
5.48	version 2.6.9	49
5.49	version 2.6.8	49
5.50	version 2.6.7	49
5.51	version 2.6.6	50
5.52	version 2.6.5	50
5.53	version 2.6.4	50
5.54	version 2.6.3	50
5.55	version 2.6.2	50
5.56	version 2.6.1	51
5.57	version 2.6.0	51
5.58	version 2.5.2	51
5.59	version 2.5.1	51
5.60	version 2.5.0	51
5.61	version 2.4.15	51
5.62	version 2.4.14	52
5.63	version 2.4.13	52
5.64	version 2.4.12	52
5.65	version 2.4.11	52
5.66	version 2.4.10	52
5.67	version 2.4.9	52
5.68	version 2.4.8	52
5.69	version 2.4.7	52

5.70	version 2.4.6	53
5.71	version 2.4.5	53
5.72	version 2.4.4	53
5.73	version 2.4.3	53
5.74	version 2.4.2	53
5.75	version 2.4.1	53
5.76	version 2.4.0	54
5.77	version 2.3.0	54
5.78	version 2.2.6	54
5.79	version 2.2.5	54
5.80	version 2.2.4	54
5.81	version 2.2.3	54
5.82	version 2.2.2	55
5.83	version 2.2.1	55
5.84	version 2.2.0	55
5.85	version 2.1.6	55
5.86	version 2.1.5	55
5.87	version 2.1.4	56
5.88	version 2.1.3	56
5.89	version 2.1.2	56
5.90	version 2.1.1	56
5.91	version 2.1.0	56
5.92	version 2.0.3	57
5.93	version 2.0.2	57
5.94	version 2.0.1	57
5.95	version 2.0.0	57
6	Bibliography	59
7	Imprint/Impressum	61
7.1	Imprint and disclaimer	61
7.2	Privacy policy	61
8	Indices and tables	63
	Bibliography	65

Shape-Out 2

Shape-Out 2 is the successor of [Shape-Out](#), a user interface for data analysis in real-time deformability cytometry (RT-DC). This is the documentation of Shape-Out version 2.16.0.

This documentation is also available as a [PDF](#).

GETTING STARTED

1.1 Installation

Shape-Out 2 can be installed via multiple channels.

1. **Windows installer:** Download the latest version for your architecture (i.e. Shape-Out_X.Y.Z_win_64bit_setup.exe) from the official [release page](#).
2. **macOS:** Download the latest version (Shape-Out_X.Y.Z.dmg or Shape-Out_X.Y.Z.pkg) from the official [release page](#).
3. **Python 3.8 with pip:** Shape-Out can easily be installed with [pip](#):

```
python3 -m pip install shapeout2
```

To start Shape-Out, simply run `python3 -m shapeout2` or `shapeout2` in a command shell.

1.2 Update

Shape-Out automatically searches for updates (you may opt-out via the Help menu) and notifies the user when a new version is available.

1. **Windows installer:** The older version of Shape-Out will be automatically uninstalled when installing a new version.
2. **macOS:** The older version of Shape-Out will be automatically uninstalled when installing a new version.
3. **Python 3.8 and pip:**

```
pip install --upgrade shapeout2
```

1.3 Supported data file formats

Shape-Out 2 exclusively supports the .rtdc data file format. This file format is based on the [HDF5 format](#) which makes it portable, consistent, and efficient.

If you have **.tdms-based datasets** (created using antique versions of Shape-In), you can still use the data after you have converted them to .rtdc files using [DCKit](#), which provides a convenient GUI for several other RT-DC data management tasks as well. The .rtdc file format is faster than the .tdms file format, occupies less disk space, and consists of only one file per measurement.

If you have **raw .rtdc files** that only contain the recorded images and no extracted events, you can perform segmentation and feature extraction using [ChipStream](#).

1.4 How to cite

If you use Shape-Out in a scientific publication, please cite it with:

Paul Müller and others (2019), Shape-Out version 2.X.X: Graphical user interface for analysis and visualization of RT-DC data sets [Software]. Available at <https://github.com/ZELLMECHANIK-DRESDEN/ShapeOut2>.

If the journal does not accept `and others`, you can fill in the missing names from the [credits file](#).

RT-DC BASICS

This section conveys the basic understanding necessary for analyzing and interpreting RT-DC data. If you have the feeling that something is not covered here, please create an [issue on GitHub](#).

2.1 Working Principle

In Real-time deformability cytometry (RT-DC), small objects, such as cells or beads, are flushed through a narrow channel at high speeds. The flow profile inside the channel causes hydrodynamic stresses that deform these objects [MOG+15], [MMM+17]. For each event (detected object), an image is recorded and analyzed in real-time [ORM+15]. The analysis consists of the extraction of several features from the event images, such as deformation, projected area, or average brightness. These features can then be used to identify and characterize sample populations; For instance, major blood cells and their pathological changes in disease conditions [THO+17].

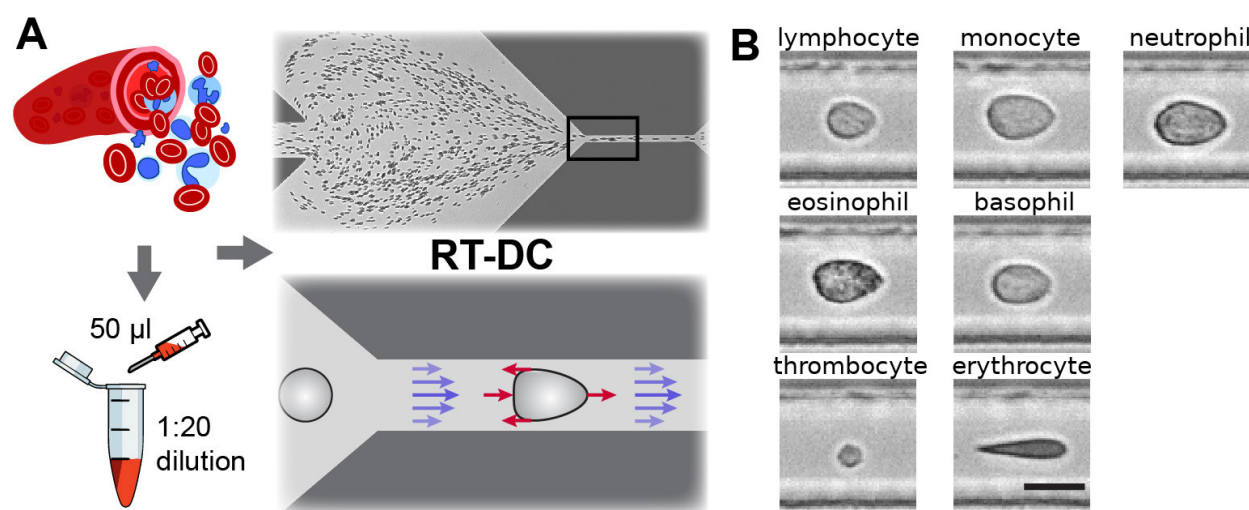


Fig. 2.1: Single-cell, morpho-rheological phenotyping of blood. (A) Analysis of whole, diluted blood. Hydrodynamic shear forces (red arrows) induce deformation of cells passing through a microfluidic channel ($20 \times 20 \mu\text{m}^2$) at speeds of more than 30 cm/s (blue arrows). (B) Representative images of blood cell types acquired. Scale bar is 10 μm . Figure and caption adapted from Toepfner et al.¹.

¹ *Detection Of Human Disease Conditions By Single-Cell Morpho-Rheological Phenotyping Of Whole Blood* by Toepfner et al., licensed under CC BY 4.0 [THO+17].

2.2 Measured Features

A multitude of features can be extracted from the data recorded during an RT-DC measurement. These features are mostly computed live during data acquisition and are stored alongside the raw image data. Here, only the most important features are discussed. A full list of the features available in Shape-Out is maintained in the [dclab documentation](#).

2.2.1 Area and porosity

The area is the projected object area which is determined via the contour of the binarized event image. Shape-Out differentiates between two types of area, area of the measured contour (“Measured area [px]”) and area of the convex contour (“Convex area [px]” and “Area [μm^2]”). The convex contour is the [convex hull](#) of the measured contour and enables a quantification of porosity (convex to measured area ratio). The porosity is often used for filtering, e.g. to *remove high-porosity dirt particles in a preprocessing step*.

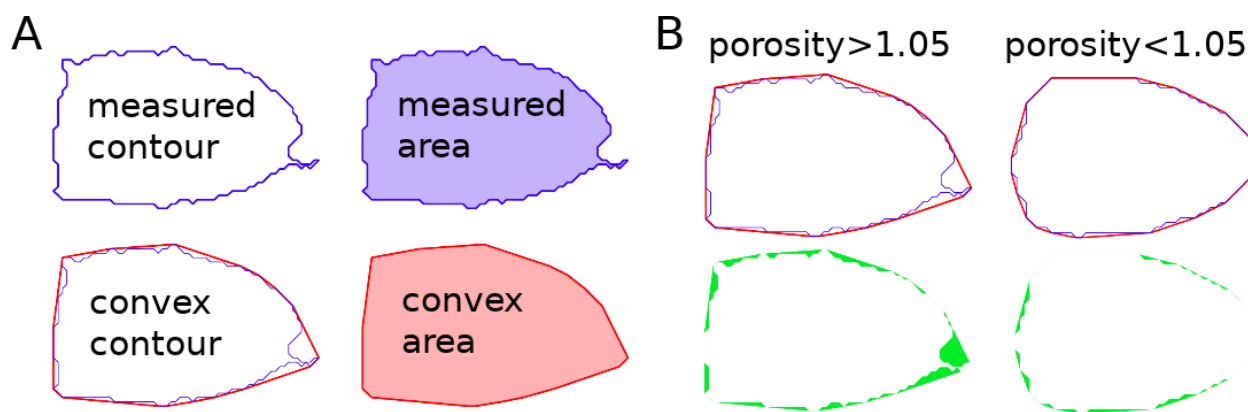


Fig. 2.2: Visualization of porosity. (A) The measured contour (blue line) defines the measured area (blue shade). The convex contour (red line) results in an area (red shade) that is usually larger than the measured area. (B) The porosity is the ratio between measured and convex contour. The difference (the “pores”) between the measured and convex areas is indicated in green. Porosity is often used to remove events with non-physical contours, e.g. for cells all events with a porosity above 1.05.

A porosity of 1 means that the measured contour is convex. Note that the porosity can only assume values larger than 1. Also note that the convex contour/area is computed on the same pixel grid as the measured contour/area and is, as such, subject to pixelation artifacts.

2.2.2 Bounding box

The bounding box of an event image is the smallest rectangle (with its sides parallel to the x and y axes) that can hold the event contour. The aspect ratio of the bounding box is the rectangle’s side length along x divided by the side length along y. The size of the bounding box along x and y as well as its aspect ratio are often used for filtering.

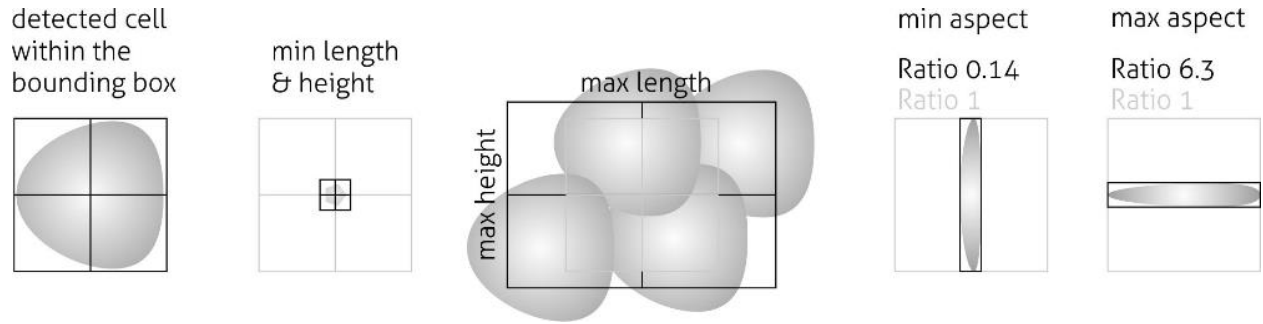


Fig. 2.3: Illustration of the event bounding box and its use cases. From left to right: definition of the bounding box, exclusion of small objects (e.g. debris) via the bounding box size, exclusion of clusters via the bounding box size, exclusion of objects elongated perpendicular to the channel axis, exclusion of objects elongated along the channel axis.

2.2.3 Brightness within contour

Quantifying the brightness values within the image contour yields information on object properties such as homogeneity or density. For instance, it has been shown that the quantities “mean brightness” and “convex area” are sufficient to identify (and count) all major blood cells in a drop of blood [THO+17].

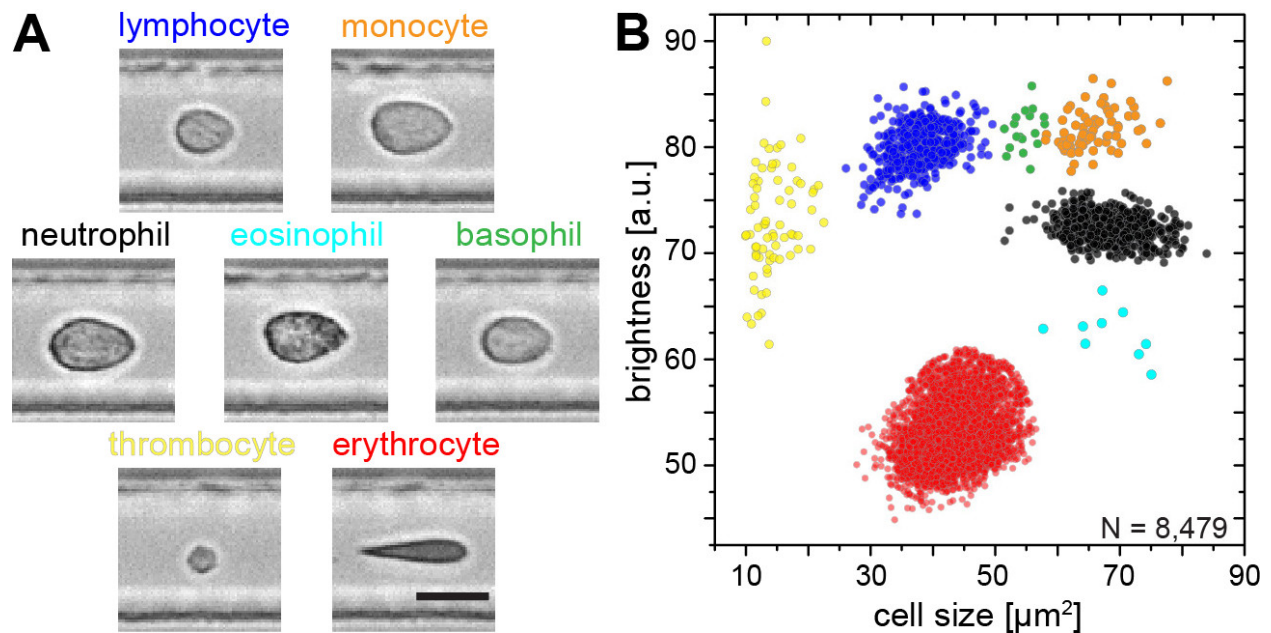


Fig. 2.4: Blood-classification with event brightness and cell size. (A) Representative images of blood cell types acquired. Scale bar is 10 μm . (B) Brightness versus cell size (area) scatter plot with cell types labeled according to the color scheme in (A). Figure and caption adapted from Toepfner et al. ^{Page 5, 1}.

In addition to the average brightness values, Shape-Out also has access to the standard deviation of the brightness in each image.

2.2.4 Deformation and elasticity

The deformation describes how much an event image deviates from a circular shape. It is defined via the circularity:

$$\begin{aligned}\text{deformation} &= 1 - \text{circularity} \\ &= 1 - 2\sqrt{\pi A}/l\end{aligned}$$

with the projected area A and the contour length of the convex hull of the event image l . The contour length is computed from the *convex* hull to prevent an overestimation due to irregular, non-convex event shapes. It has been shown that the knowledge of deformation and area allows to derive a value for elasticity in RT-DC [MOG+15] [MMM+17]. As a convenient measure for elasticity, isoelasticity lines are often employed to visualize stiffness.

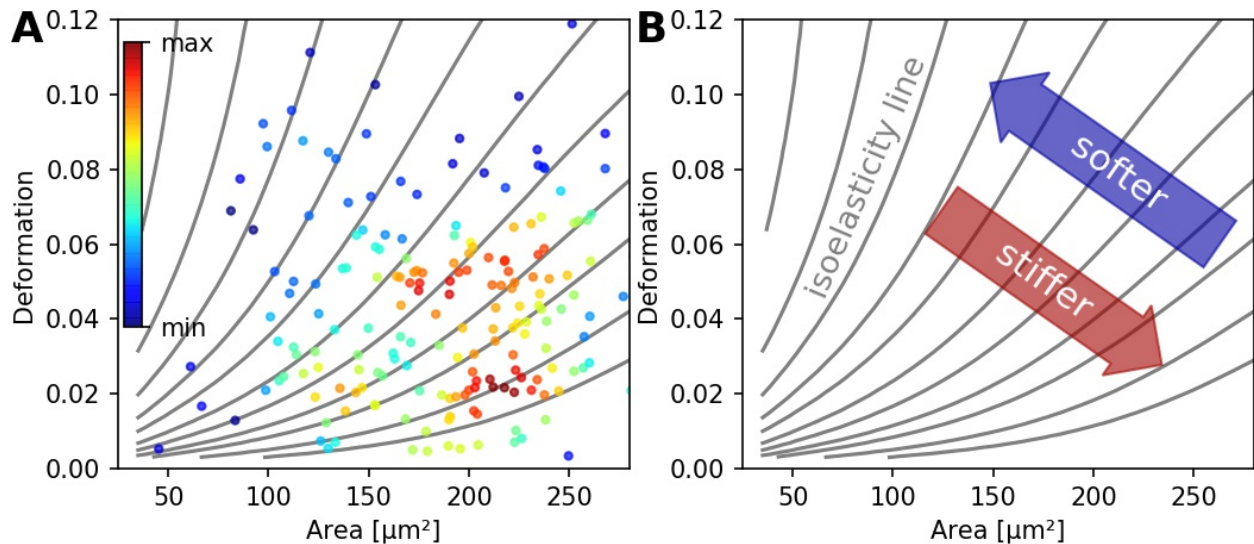


Fig. 2.5: (A) Typical deformation versus cell size scatter plot. The color scale indicates event density. (B) Isoelasticity lines derived from numerical simulations indicate trends in stiffness.

Note that it is also possible to directly *access the Young's modulus in Shape-Out*.

2.2.5 Fluorescence

Real-time fluorescence and deformability cytometry (RT-FDC) records, in addition to the event images, the fluorescence signal of each event [RPJ+18]. The raw fluorescence data consists of the one-dimensional fluorescence intensity trace from which features such as peak fluorescence or peak width can be computed. For more advanced applications, RT-FDC also supports multiple fluorescence channels.

2.2.6 Inertia ratio

The inertia ratio is the ratio of the second order *central moments* along x and y computed for the event contour. Thus, the inertia ratio is a measure of deformation. In contrast to deformation (which is computed from the contour), inertia ratio is based on the integral over the cell area and thus less prone to noise. In comparison to deformation, the inertia ratio has a low correlation to porosity. Shape-Out also allows to compute the principal inertia ratio which is the maximal inertia ratio that can be obtained by rotating the contour. Thus, the principal inertia ratio is rotation-invariant which makes it applicable to reservoir measurements where e.g. cells are not aligned with the channel. To quantify the alignment of the measured objects with the measurement channel, Shape-Out can additionally quantify the tilt of the contour relative to the channel axis.

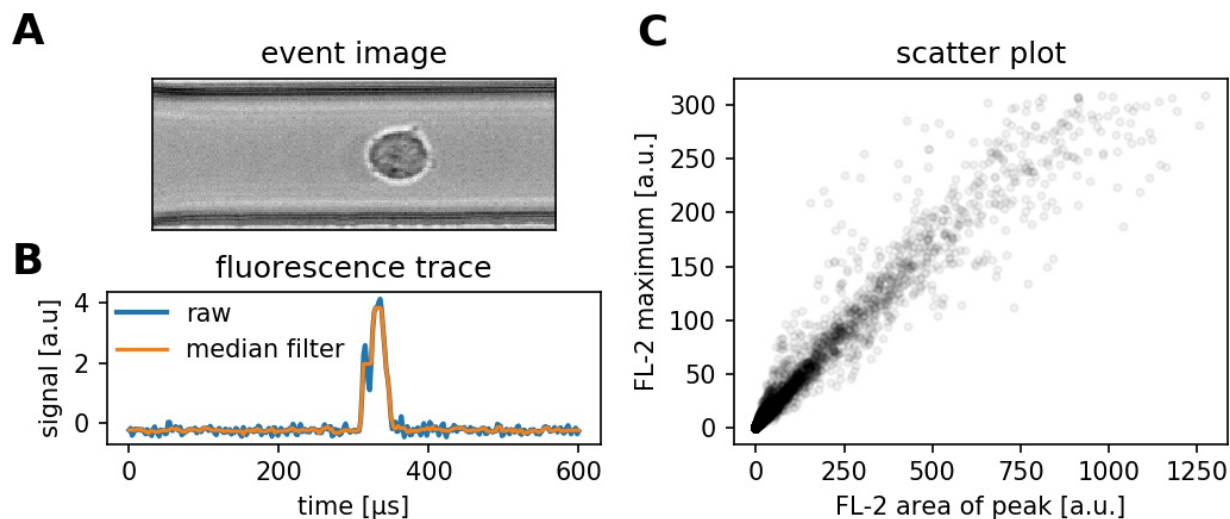


Fig. 2.6: (A) Event brightfield image. (B) Fluorescence trace of the event. The raw fluorescence data and the fluorescence data filtered with a rolling median filter (from which the parameters are computed) is shown. (C) Scatter plot of two parameters extracted from the fluorescence trace.

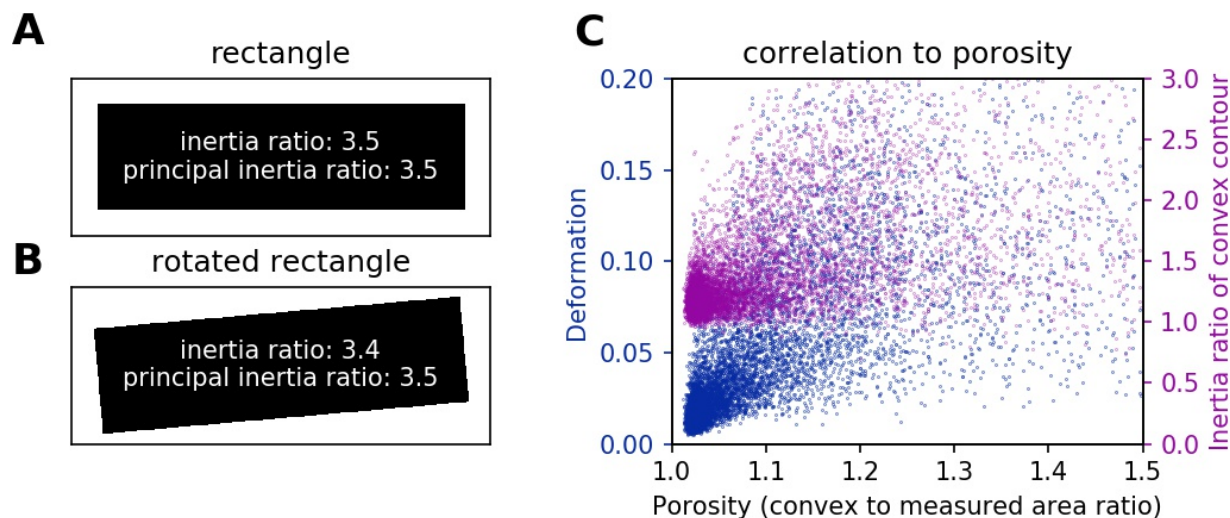


Fig. 2.7: (A) For a rectangle that is aligned with the coordinate axes, the inertia ratio and the principal inertia ratio are identical. (B) If the rectangle is rotated, the inertia ratio changes, but the principal inertia ratio does not. (C) Comparison between deformation and inertia ratio when plotted against porosity for an exemplary RT-DC experiment. Deformation exhibits a higher correlation to porosity.

2.2.7 Volume

Shape-Out can compute the volume from the event contour under the assumption of rotational symmetry, i.e. it is assumed that the projection of the cell volume onto the detector plane does not change when the cell is rotated, with a rotational axis parallel to the flow direction. The computation of the volume is based on a full rotation of the upper and the lower halves of the contour from which the average is then used [HWT02]. Volume has the advantage to be less correlated to deformation when compared to the projected area and it is therefore a better measure of cell size in the channel.

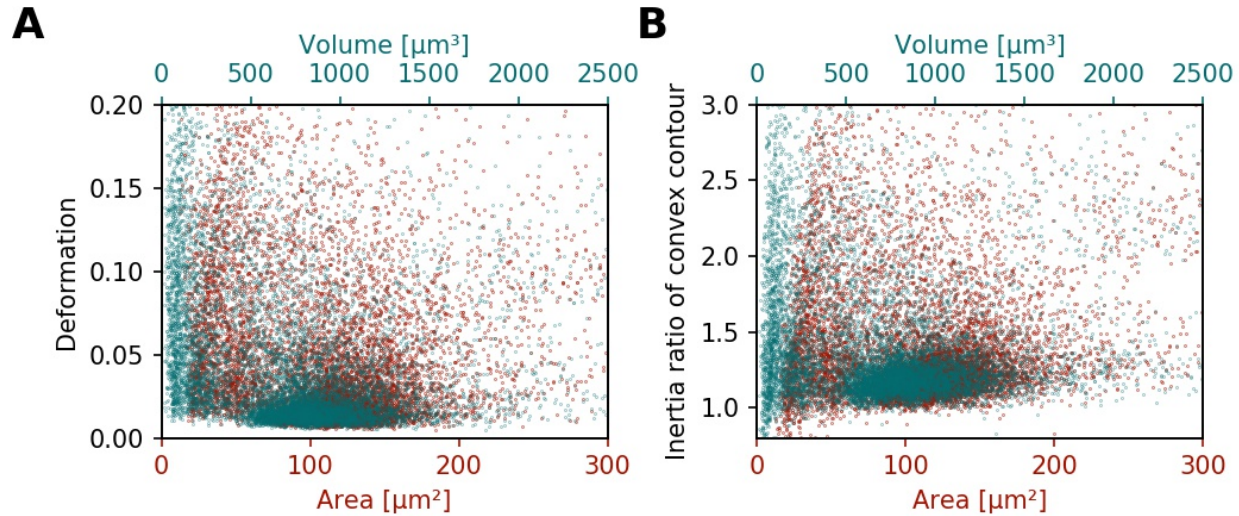


Fig. 2.8: (A) Deformation versus area (red) and volume (cyan) for an exemplary RT-DC dataset. There is a correlation between area and deformation, at least for small ($< 50 \mu\text{m}^2$) areas. (B) Inertia ratio versus area and volume. A correlation between inertia ratio and area is visible as well.

USER INTERFACE

3.1 Terminology

Shape-Out 2 introduces several terms in the user interface that also play a role in data analysis and are consequently used in the entire code base.

basin

A source of feature data stored in datasets other than the one opened by the user. For an overview on basins, please take a look at the [dclab documentation](#). When exporting data from Shape-Out, the original dataset can be referenced via basins, allowing you to reduce data redundancy.

block matrix

The *Block Matrix* is a visualization of the analysis pipeline. It is divided into data matrix (filters) and plot matrix (plots).

dataslot or slot

A slot holds all information about a measurement: the path to the .rtdc file, fluorescence labels, display color, etc. (see the *Dataset* tab in the *Analysis View*).

filter

A filter is a set of filtering options (box filter, polygon filter, downsampling, etc.) that can be applied to a slot (see the *Filter* tab in the *Analysis View*). Filters can be exported and imported again in Shape-Out 2 (.sof file format).

filter ray

A filter ray is a list of filters that can be applied to a slot. In Shape-Out 2, each row in the *Block Matrix* contains one filter ray.

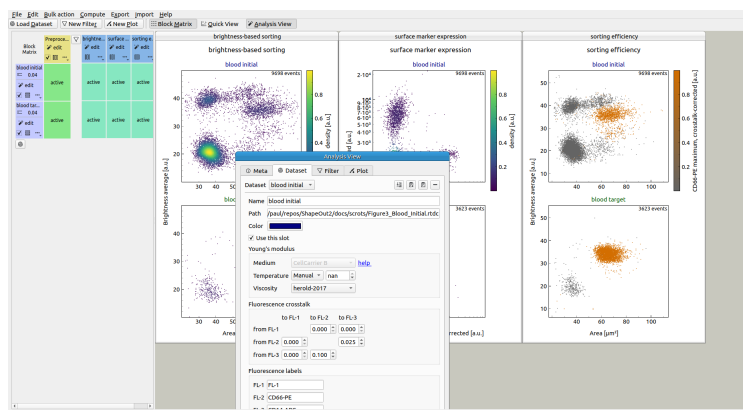
pipeline

A pipeline consists of all filters, slots, plots, and the filter rays (the filter selection) applied to each slot. A Shape-Out 2 session file (.so2) stores all information necessary to rebuild a pipeline.

plot

A plot is a user-defined visualization of a slot/filter ray combination.

3.2 Basic usage

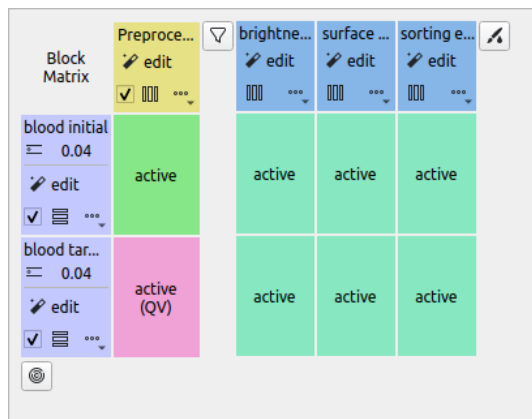


The user interface is split into several parts: the menu bar and the tool bar at the top, the Block Matrix on the left, and the Workspace on the right (example data taken from [NUH+20], [NUH+19]).

3.2.1 Menu bar and tool bar

The menu bar is used for session management (File menu) and makes additional functionalities available, such as batch processing, data statistics, data export, plot export, or filter import/export. The tool bar contains shortcuts for adding new datasets, filters, or plots (left part) and allows to hide/show the *Block Matrix* as well as the *Quick View* and *Analysis View* windows (right part).

3.2.2 Block Matrix



The Block Matrix gives an overview of the current analysis pipeline. Each row represents a dataset (purple). The columns represent either filters (yellow) or plots (blue) of your pipeline. You can change the order of datasets via the *Edit|Change dataset order* menu bar entry.

You can perform dataset operations in the purple rectangular area at the beginning of each row: To modify a dataset, click on the *edit* button. You can duplicate, insert anew (unmodified), or remove datasets using the dropdown menu. You can also exclude a dataset from an analysis via the check box.

Filters can also be modified, copied, removed and disabled. By default, all filters are disabled when they are created. To apply a filter to a dataset, click on the corresponding matrix element. The element changes its color from gray

(inactive) to green (active). In Shape-Out, all filters that are applied to a dataset are called a **filter ray**. In the above example, the filter ray only consists of a single filter for each dataset. Filter rays may be different for each dataset.

By holding down the *Shift* key while clicking on a matrix element, you can activate the *Quick View* for the specific dataset (with filters applied up until the selected column). The block matrix element is then colored pink.

To add a plot, click on the *New Plot* button in the tool bar. This adds a plot column with a blue header to the Block Matrix and creates an empty plot window. You can add datasets to your plot by clicking on the corresponding matrix elements. In the above example, both datasets are being used in all three plots.

The modification of datasets, filters, and plots is discussed below.

3.2.3 Workspace

The Workspace is designed as an infinite scrollable area and contains all plot windows as well as the *Quick View* and Analysis View windows.

3.2.4 Analysis View

The analysis view is separated into four tabs (see screenshots below).

- The **Meta** tab displays all metadata of the selected dataset that are stored in the original .rtdc file.
- The **Dataset** tab allows to specify additional metadata, such as unique colors used for plotting and additional metadata for computing the Young's modulus or correcting for fluorescence cross-talk. It also allows to specify fluorescence channel labels that will then be used for labeling the axes of plots.
- The **Filter** tab is used to modify the filters of the pipeline. New box filters can be added by selecting *Choose box filters...* Polygon filters are created in the *Quick View* window.
- The **Plot** tab allows to specify all plotting parameters. Please take special note of the *Division* option in the *Layout* section (defines the arrangement of the subplots) and the *Marker hue* option in the *Scatter plot* section (allows you to specify whether the scatter data points are colored according to a kernel density estimate (KDE), another feature dimension, or the dataset color specified in the *Dataset* tab). In this example, contour plots are not used.

Meta

Dataset

Filter

Plot

Dataset blood target

Experiment

Sample name: Figure3_Blood_Target_neuBr
Index of measurement run: 1
Number of recorded events: 8785
Date of measurement: 2019-05-27
Start time of measurement: 12:07:10

Setup

Medium used: CellCarrier B
Width of microfluidic channel: 20.00 μm
Imaged chip region: channel
Flow rate in channel: 0.0400 $\mu\text{L/s}$
Sample flow rate: 0.0100 $\mu\text{L/s}$
Sheath flow rate: 0.0300 $\mu\text{L/s}$
Unique setup identifier: ZMDD-AcC-fe3cdd-2a2250
Modules used: AcCellerator, FluorescenceModule
Software: ShapeIn 2.0.8

Imaging

Light source device type: LED (ZMD L1)
Light source flash duration: 2.00 μs
Imaging frame rate: 1250.00 Hz
Pixel size: 0.340 μm
Image x coordinate on sensor: 629 px
Image y coordinate on sensor: 512 px
Image width: 250 px
Image height: 80 px

Fluorescence

Trace bit depth: 16
FL1 description: 525/50
FL2 description: 593/46
FL3 description: 700/75
Number of active channels: 3
Number of available channels: 3

MetaDatasetFilterPlot

Dataset blood initial

Name blood initial

Path /paul/repos/ShapeOut2/docs/scrots/Figure3_Blood_Initial.rtdc

Color

☒ Use this slot

Young's modulus

Medium CellCarrier B [help](#)

Temperature Manual nan

Viscosity herold-2017

Fluorescence crosstalk

	to FL-1	to FL-2	to FL-3
from FL-1		0.000	0.000
from FL-2	0.000		0.025
from FL-3	0.000	0.100	

Fluorescence labels

FL-1 FL-1

FL-2 CD66-PE

FL-3 CD14-APC

Reset

Apply

Meta

Dataset

Filter

Plot

Filter set: Preprocessing

Name: Preprocessing

☒ Use this filter

☐ Limit number of events to 5000

☐ Remove invalid events

Box filters

Area [μm^2]
22.0120.0

Porosity (convex to measured area ratio)
1.0001.100

Select box filters...

Polygon filters

No polygon filters have been created yet.
Create polygon filter

ResetApply

Plot set: brightness-based sorting

Name: brightness-based sorting

Layout

Division: One plot per dataset | 1 column(s)

Size: X 450 pt | Y 750 pt

☒ Label subplots

General

X axis: Area [μm^2] | linear

20.0 | 90.0

Y axis: Brightness average [a.u.] | linear

10.00 | 50.00

KDE: Histogram

☒ Isoelasticity lines ☐ Auto XY-range

☒ Scatter plot

☐ Downsampling: 5000 events

Marker size: 1.5 pt

Marker hue: KDE

Colormap: viridis

☒ Show event count

☐ Contour density plot

Level 1: 95th percentile | 3.00 pt | solid

Level 2: 50th percentile | 1.50 pt | dashed

Spacing X: 3.00 | Y: 0.781 | Find best spacing

☐ Legend

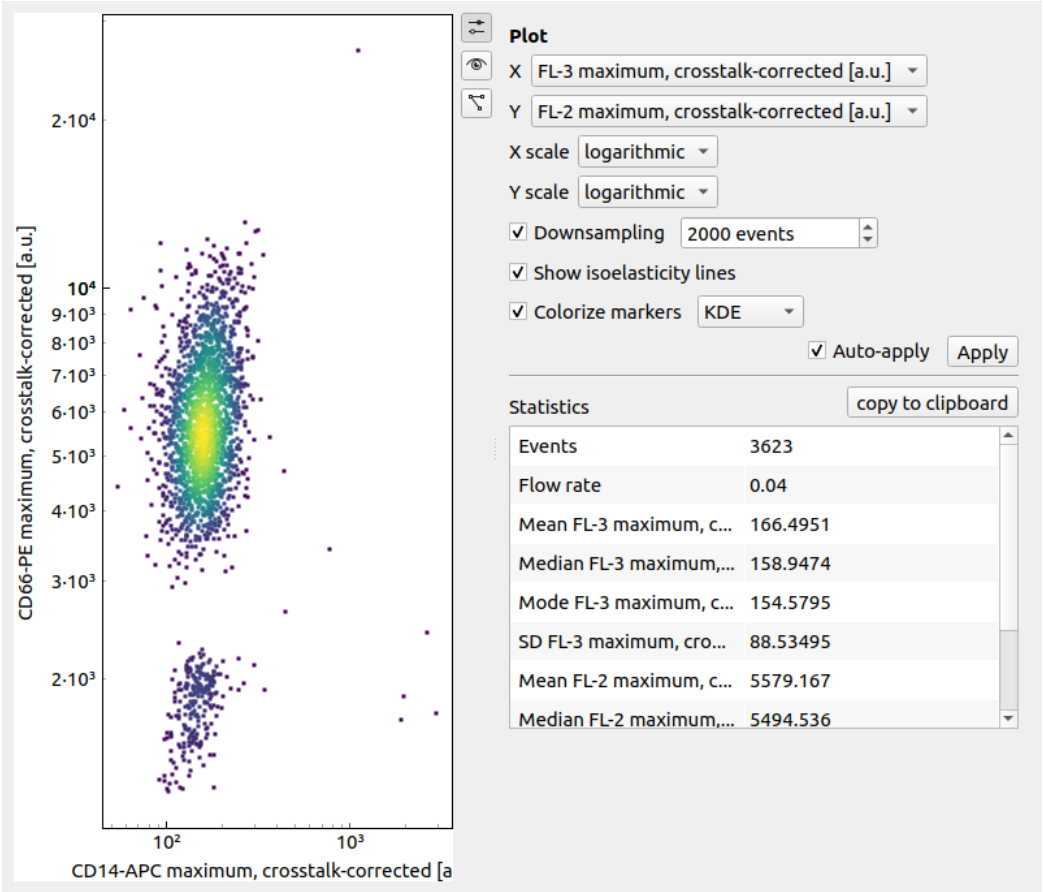
Reset Apply

3.2.5 Quick View

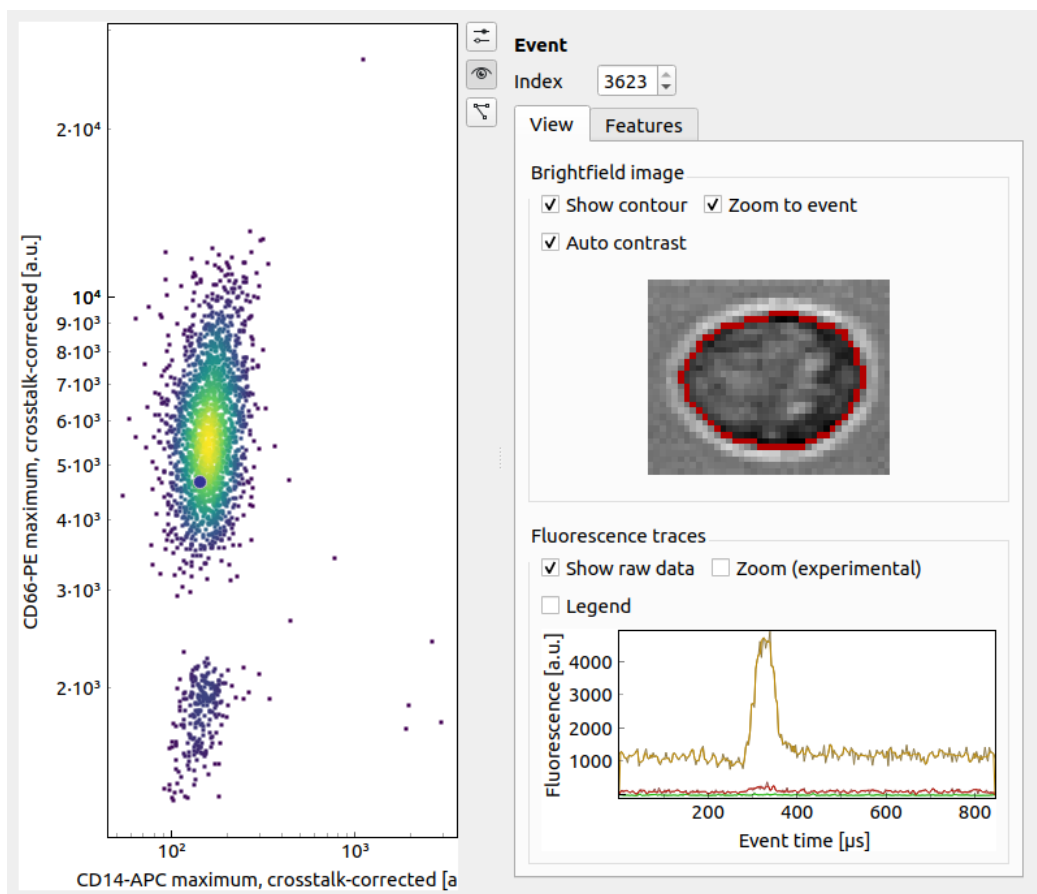
The Quick View is meant for dataset exploration. It consists of a scatter plot on the left (left click for panning and right-click for zooming) and a set of tool panels that are accessible via the corresponding tool buttons on the right.

Use the **Plot** panel to define all plot parameters. It also displays common statistics of the two features plotted. The drop down menus for the *X* and *Y* axes list the available features for the current dataset. The background color for each of the features is an indicator for the feature availability:

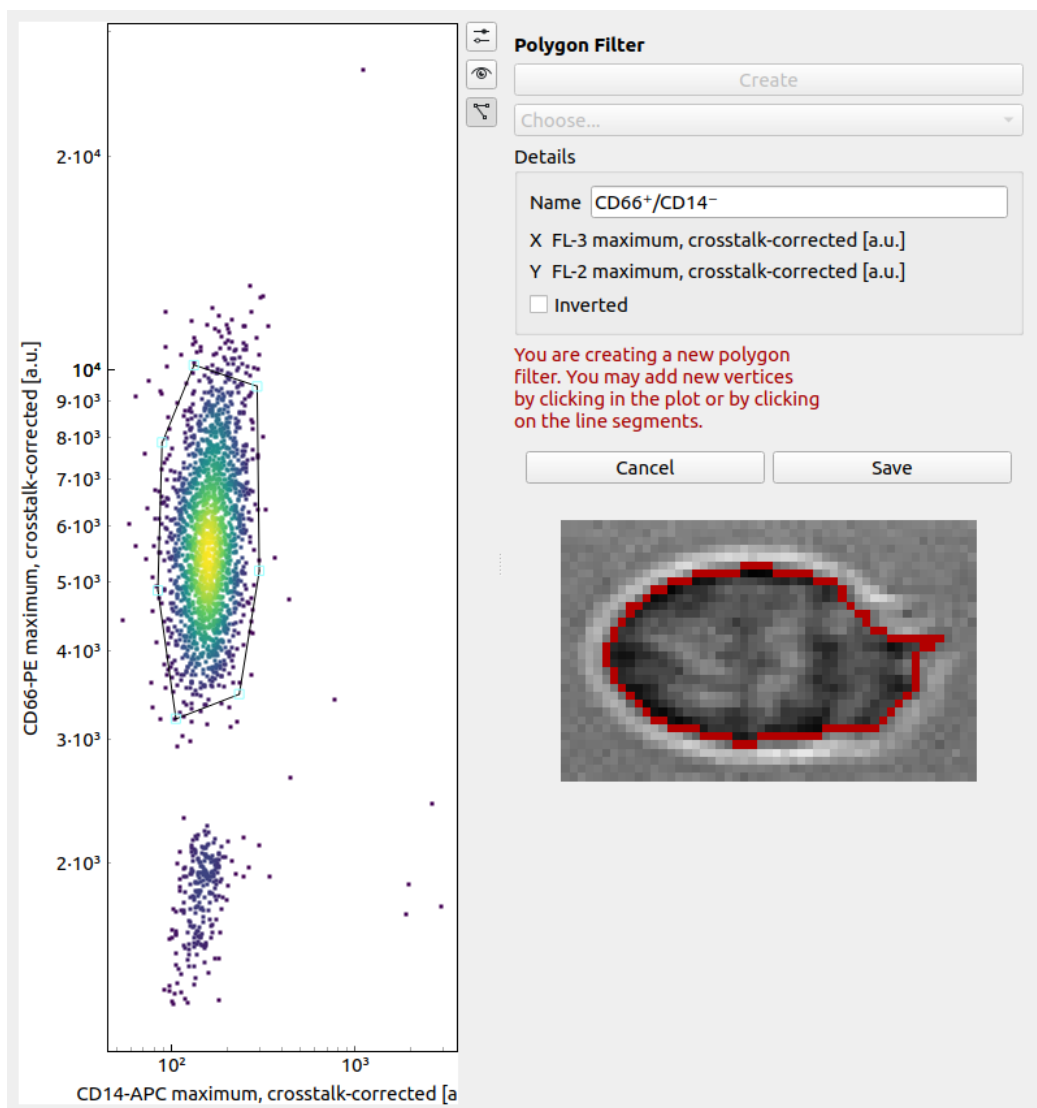
- *green*: The feature data are present in the current dataset or are already computed.
- *blue*: The feature data are part of another dataset, a *basin*, which may be at a remote location (e.g. on *DCOR*) or on the local file system.
- *orange*: The feature data must be computed before it can be displayed. The feature is an *ancillary feature*.



The **Event** panel displays all parameters of an individual event. You can select single events by clicking in the scatter plot or by scrolling through the *Index* spin control. If available, the event image is shown alongside the fluorescence trace of the event. All features of the event are listed in a separate tab.



The **Polygon Filter** panel allows you to create and modify polygon filters. When the panel is active you can move the mouse pointer across the scatter plot and the image of the event closest to the mouse pointer is displayed.



QUICK GUIDES

4.1 Checking experimental data for consistency

- **Trends over time:**

To verify that the sample “behaves” stationary during the measurement, it is helpful to plot a few selected features versus time. No systematic deviations should be observable, as in the figure below.

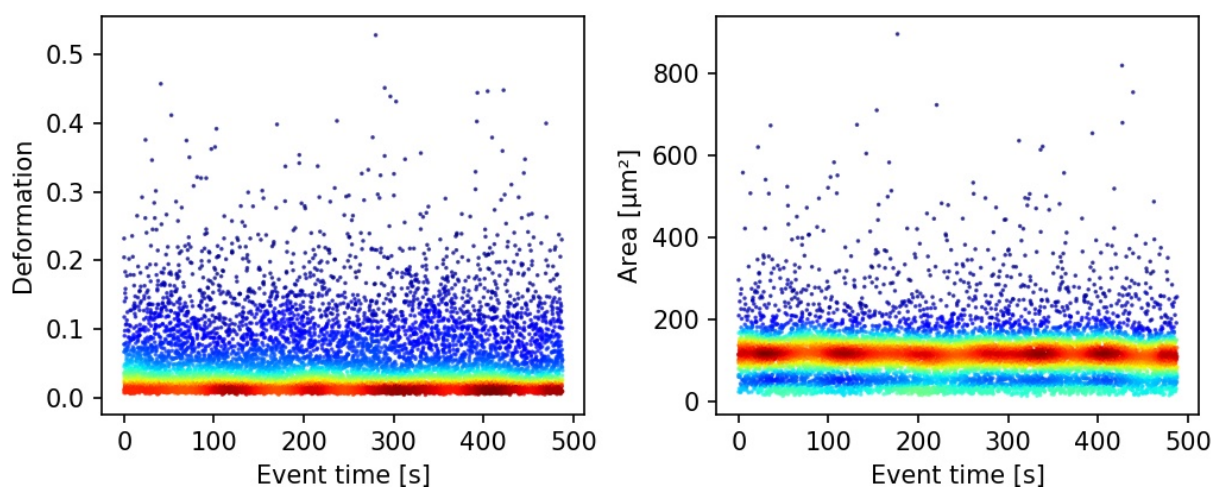


Fig. 4.1: Deformation and event area versus time. There is no systematic trend over time, indicating stable measurement conditions.

- **Count rate:**

Trends over time do not directly visualize the count rate (measured events per second). The count rate is the slope of the event index versus event time plot and should remain constant.

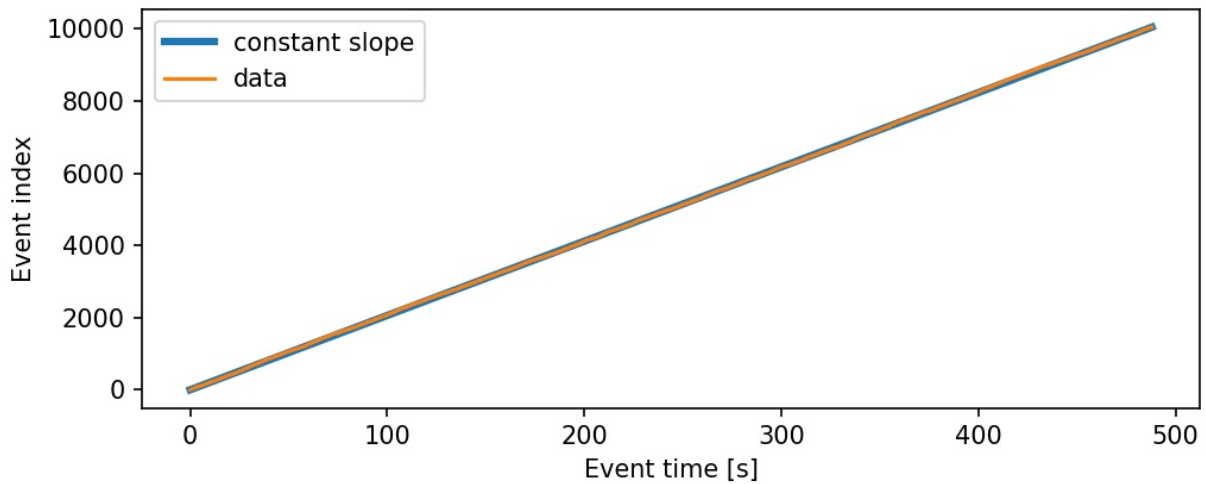


Fig. 4.2: The event index versus event time plot shows a constant slope, an indicator for stable measurement conditions.

4.2 Excluding invalid events

Filters can be used to exclude invalid events, such as cell debris, cell doublets or larger aggregates, or cells that are not intact, from an analysis.

- **Area:**

The event area (the area defined by the event contour) can be used to filter cell aggregates (larger area), dead or degenerate cells, as well as cell debris (small area). Use the deformation versus area plot to identify exclusion candidates by clicking on an event and visualizing it in the event area.

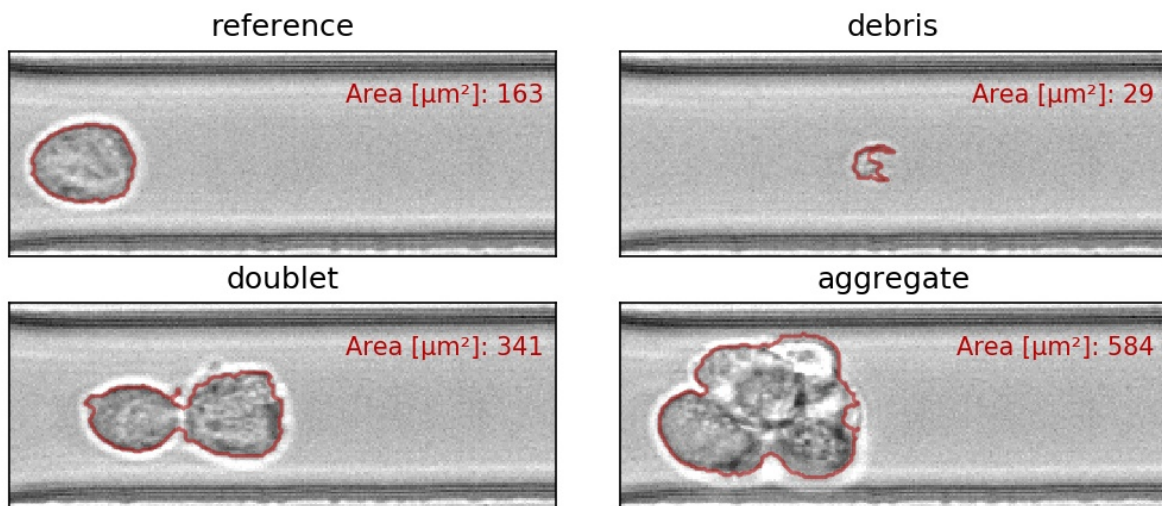


Fig. 4.3: Examples of events with small or large areas.

- **Aspect and inertia ratio:**

The aspect ratio of the bounding box and the inertia ratio of the contour can be used to filter cell aggregates and otherwise invalid events. For instance, an aspect ratio below 1 (elongation perpendicular to the channel axis) is

most-likely debris and can be excluded from the analysis. An inertia ratio below 1 also indicates invalid events.

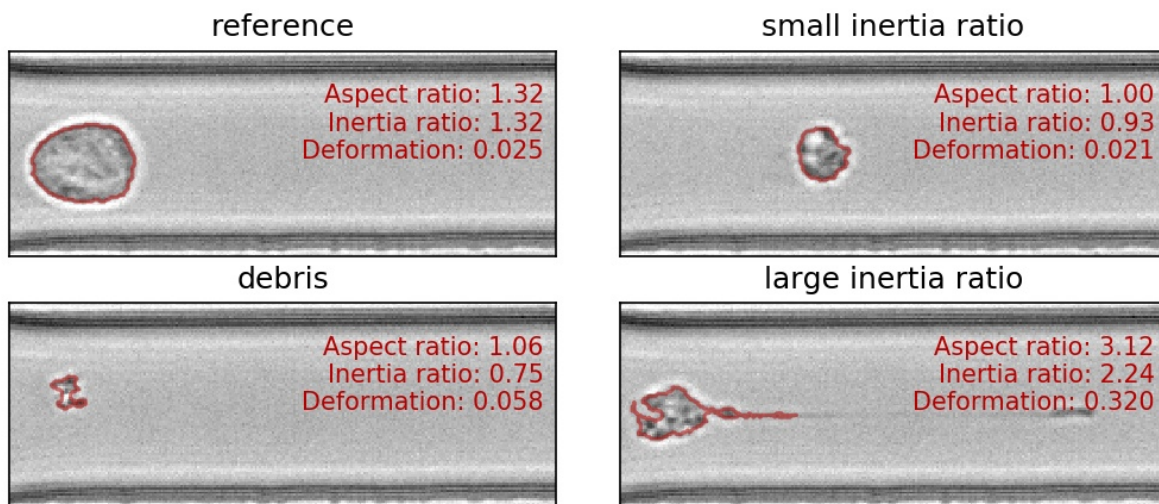


Fig. 4.4: Examples of events with various aspect and inertia ratios.

- **Porosity:**

The porosity is the ratio between measured contour and the convex contour. Porosity is commonly used to remove events with non-physical contours, e.g. for cells, all events with a porosity above 1.05.

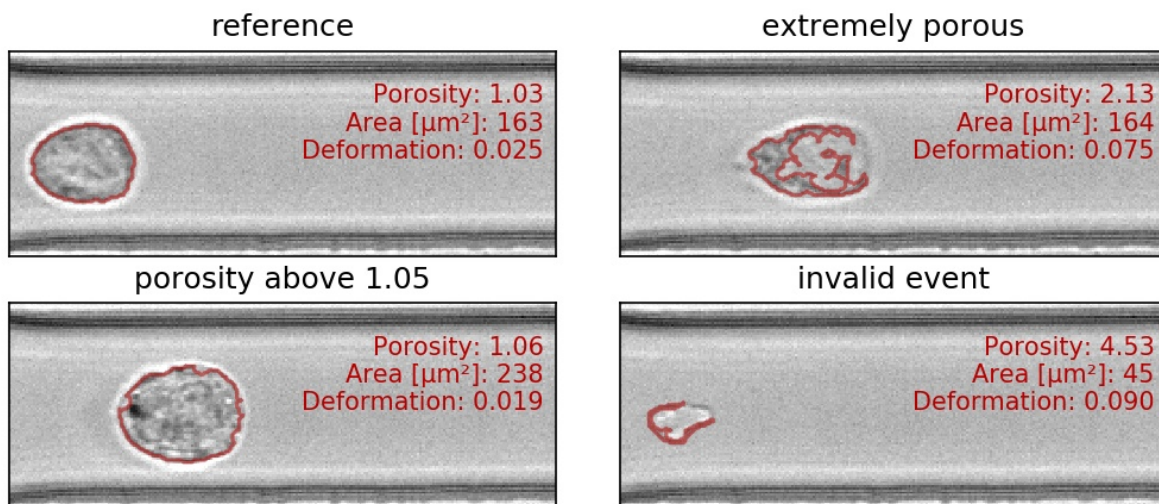


Fig. 4.5: Examples of events with various porosities.

4.3 Accessing DCOR data

The [deformability cytometry open repository \(DCOR\)](#) allows you to upload and access RT-DC datasets online (internet connection required). In Shape-Out 2, you can access parts of the dataset (e.g. just two features) without downloading the entire data file (which includes image, contour, and traces information). This saves disk space and time when accessing large datasets.

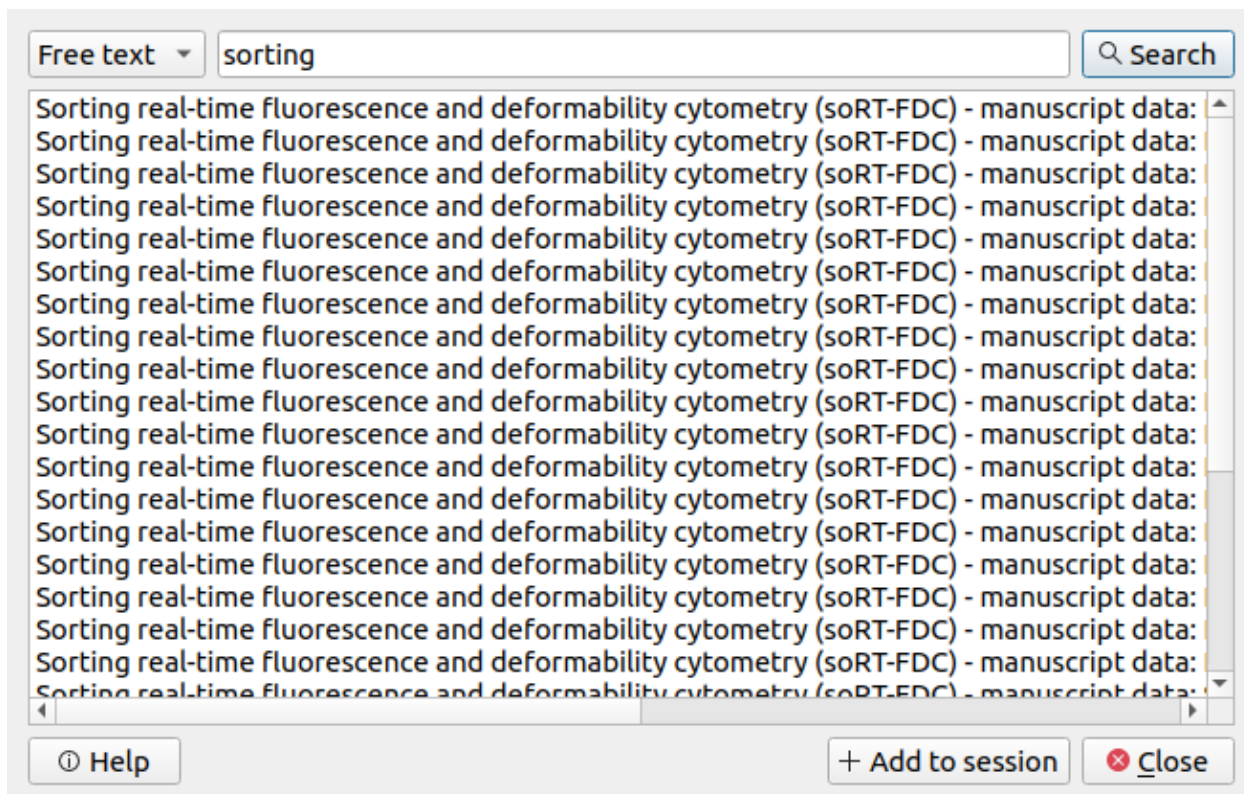


Fig. 4.6: Dialog for loading DCOR data.

In the *File* menu, choose *Load DCOR data*. A dialog (Fig. 4.6) lets you search data in the DCOR repository.

Note: If you need to access private data, you have to specify your personal API key in the preferences dialog (via the *Edit* menu). There, you can also specify which server you wish to connect to. You can find your personal API Key in your user profile page after you logged in (e.g. at <https://dcor.mpl.mpg.de>).

You can choose between a free text search (dataset and resource names, tags, etc.) and an identifier search (dataset and resource identifiers). After clicking the *Search* button, you may select the resources you wish to load into your session in the list view below. Then, click *Add to session* to load the data.

4.4 Young’s Modulus

With Shape-Out, it is possible to translate the measured area and deformation to the Young’s modulus based on numerical simulation for fully elastic spheres according to Mokbel et al. [MMM+17].

The theoretical background, including the computation of the viscosity for the MC-PBS media used in RT-DC, is discussed in more detail in the [dclab docs](#).

Note: For reservoir data, the Young’s modulus cannot be computed. The corresponding options are hidden.

4.4.1 Parameter settings

The parameters for computing the Young’s modulus can be set in the *Dataset* tab of the *Analysis View*. The Young’s modulus is computed using a precomputed look-up table and additionally depends on channel width, flow rate, pixel size (pixelation correction), and viscosity. For known media, such as CellCarrier, the viscosity can be derived from channel width, flow rate, and temperature. In some RT-DC setups, the chip temperature is recorded during the measurement. For instance, in Fig. 4.7, the average chip temperature of 22.5°C from the [setup] metadata section is used. The value of the resulting viscosity is shown below. If the chip temperature is recorded for each event, then the user may select the *From feature* option (Fig. 4.8). In this case, the Young’s modulus is computed from the individual viscosities for each event.

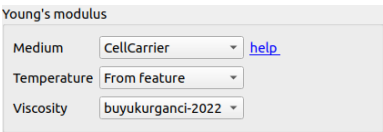


Fig. 4.8: Use the temperature (temp) feature.
If the temperature is not given as a feature or as metadata, then you may select the temperature manually. This case is visualized in Fig. 4.9. Here, the temperature is purposely set outside of the known range defined in [BBN+23], which is highlighted by coloring the viscosity red.

You may also set the viscosity manually by selecting *other* as a medium (Fig. 4.10). In this case, the values for temperature are irrelevant. Please only use this option if you know what you are doing (e.g. you have considered shear-thinning and temperature-dependence [BBN+23, Her17]).

Click *Apply* for any changes to take effect. The Young’s modulus is then available for the selected dataset.

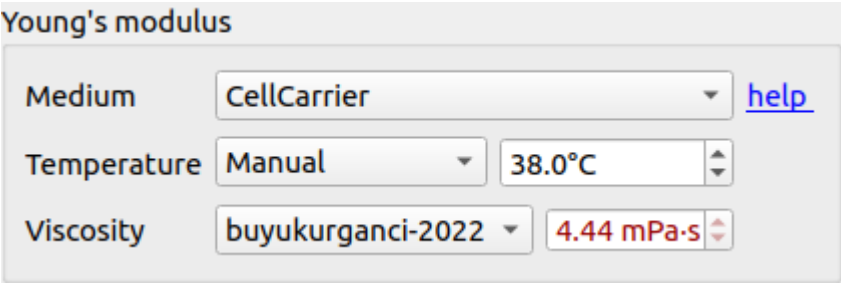
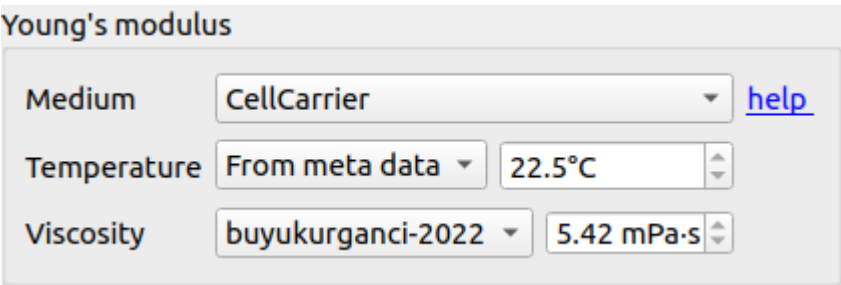


Fig. 4.9: Temperature outside of known range.

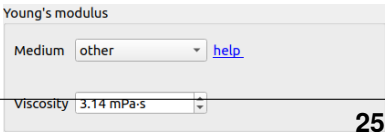


Fig. 4.10: Manually set the viscosity.

Note: In order to prevent users from doing a wrong analysis, Shape-Out does not allow users to change the buffer in the *Dataset* tab if CellCarrier, CellCarrier B or water/PBS were selected in Shape-In. Therefore, the analysis of the Young’s modulus cannot be re-done for a different buffer.

4.4.2 Bulk actions

The *Bulk action* menu has an entry for Young’s modulus computation. In the associated dialog you can set the corresponding parameters for all datasets of the current session. Note that the options in this dialog do not necessarily reflect the options available for the individual datasets. Only valid options are adopted. For instance, you will not be able to change the medium for a dataset if a medium is already given in its metadata. To verify the options set, you can always check the current setting via the *Analysis View* (see above).

4.4.3 Validity

The computation of the Young’s modulus is valid only for objects that initially have a spherical shape. In addition, the deformation and size values must be in a “valid region”. Events outside this region will have a *nan*-valued (not a number) Young’s modulus. Note that as a result, these events will be excluded from all plots when *remove invalid events* is checked in the *Filter* configuration tab.

The invalid regions (white in the figure above) include objects that are very small or objects with very low deformation values. The reason for that is a very steep increase of the Young’s modulus with little decrease in deformation that could potentially result in very large simulation errors. In addition, regions with high deformation are invalid as well, because the simulations do not converge (objects simulated with lower Young’s moduli become more and more elongated until they rupture). In practice, this means that the channel size has to be selected carefully to match the object sizes. Larger object sizes require wider channels if meaningful values for the Young’s modulus are to be computed.

In the following, additional visualizations for other commonly used channel sizes and flow rates are shown:

4.4.4 Implementation

As described above, the Young’s modulus can be derived in multiple ways, for known media and global or event-based temperature values. The underlying implementation is described in the [dclab docs](#).

4.5 Statistical significance testing (R and lme4)

Since version 2.5.0, Shape-Out 2 allows you to quantify the statistical significance (p-value) when comparing two measurement groups. For this to work, you need to have R installed (tested with [R 3.6.3](#)). The analysis uses linear mixed effects models (LMM) as described in [\[HMMO18\]](#) and yields results identical to those obtained with Shape-Out 1.

Warning: Unfortunately, LMM analysis currently does not work with the .app or .pkg bundle on macOS. This problem is tracked in [issue #73](#). If you are using macOS and you would like to use LMM analysis, you have to install Shape-Out 2 as a Python package (see [Installation](#)).

The LMM analysis is performed using the *lme4* R package and is based on the [implementation in dclab](#) (please read for more information on the options available) which uses [rpy2](#) to connect to R. Here, we make use of the dataset [\[XRM+20\]](#) to illustrate this functionality.

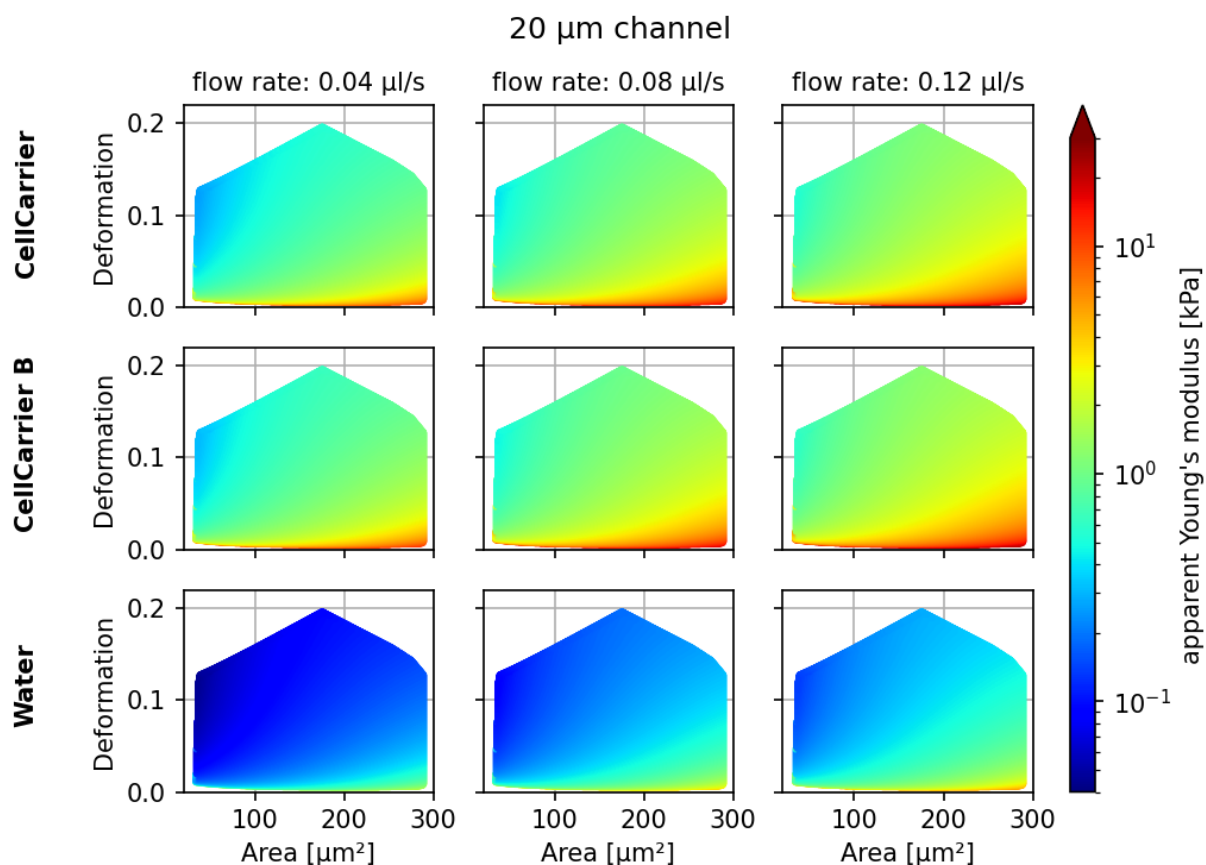
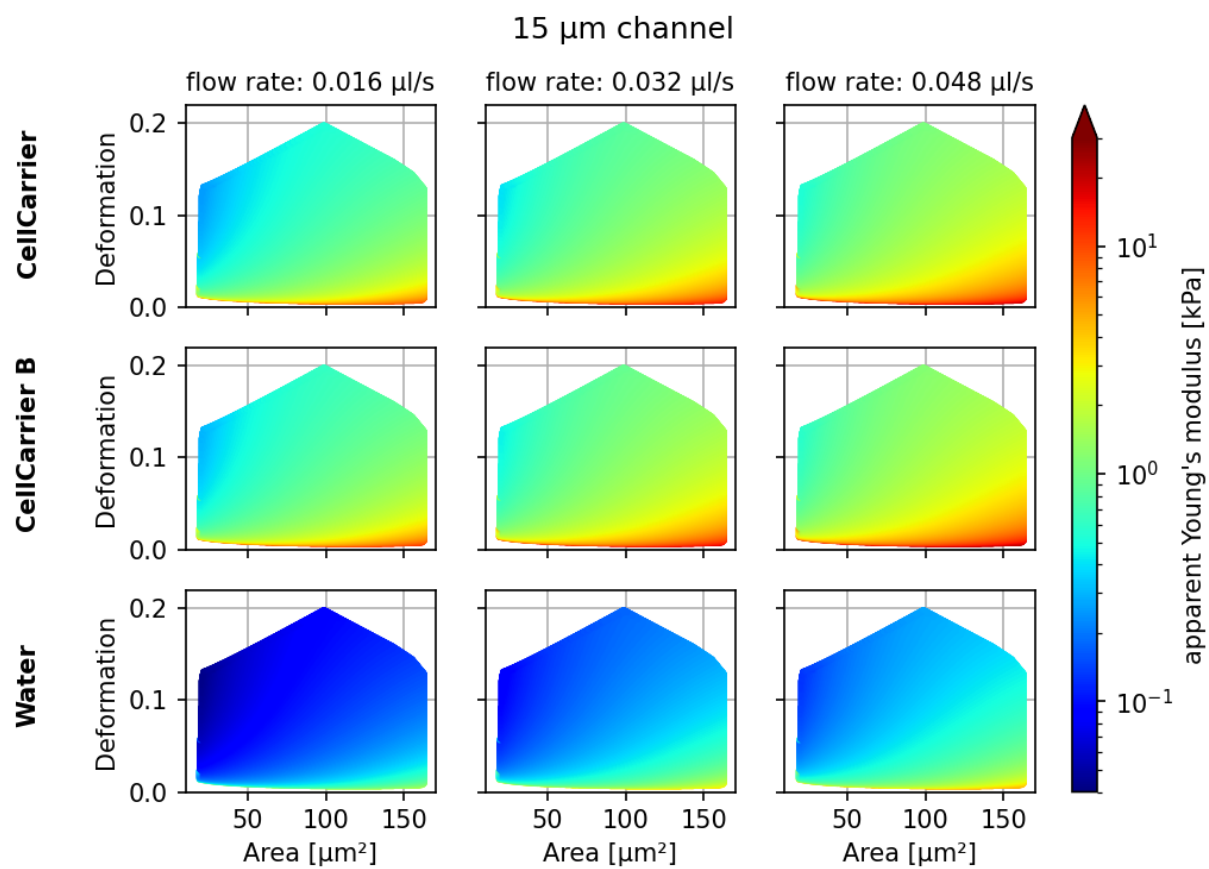
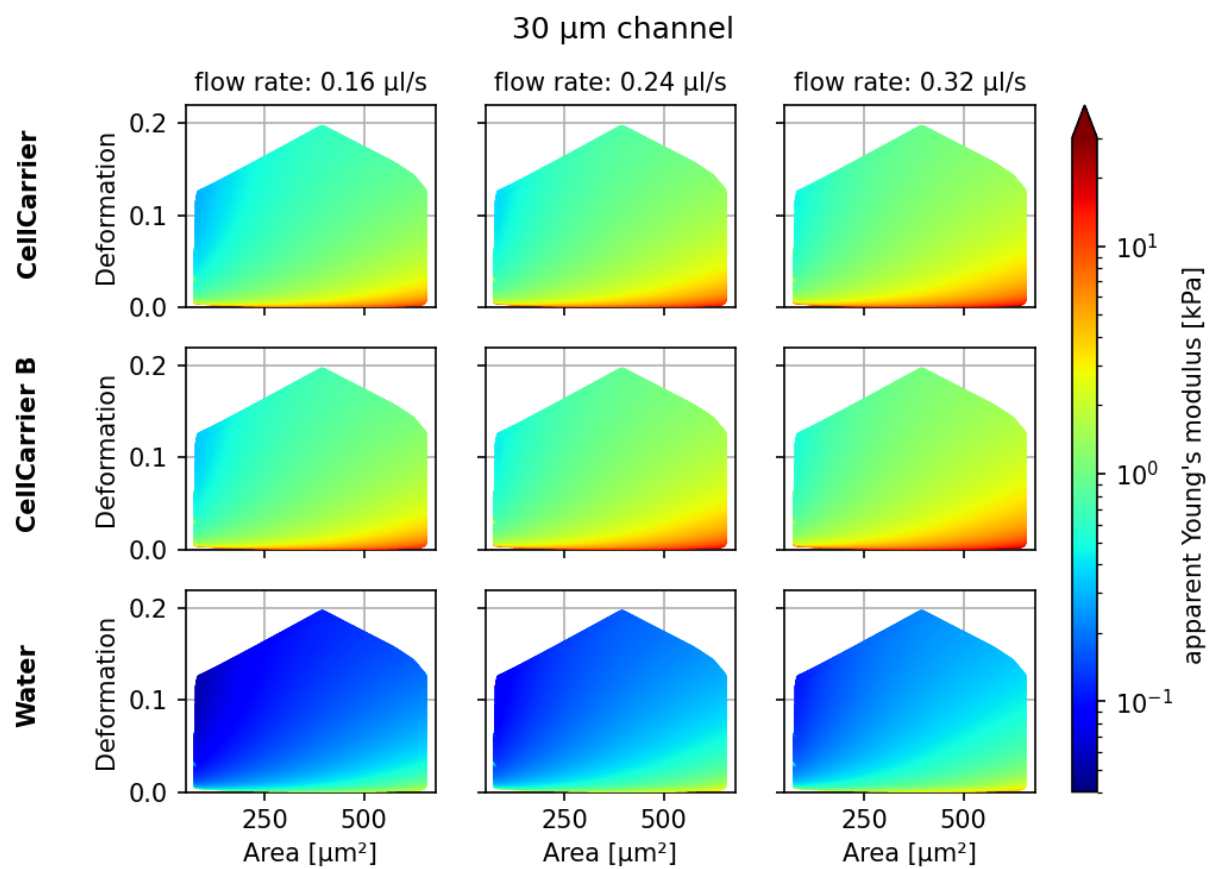
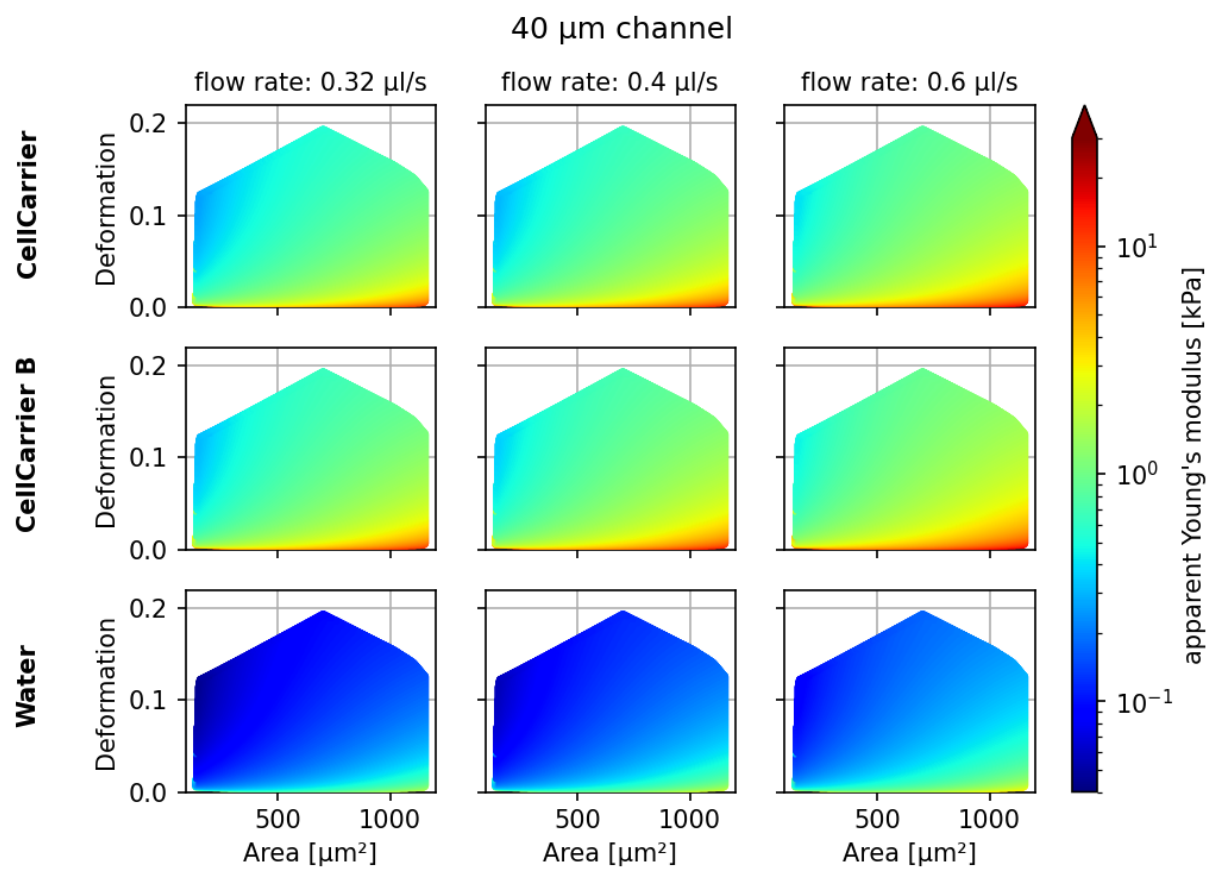


Fig. 4.11: Visualizations of the support and the values of the look-up table (LUT) used for determining the Young's modulus from deformation and cell area. The values of the Young's moduli in the regions shown depend on the channel size, the flow rate, the temperature, and the viscosity of the medium [MOG+15]. Here, they are computed for a 20 μm wide channel at 23°C with an effective pixel size of 0.34 μm . The viscosity of the MC-PBS buffers is computed according to [BBN+23] and the data are corrected for pixelation effects according to [Her17].







4.5.1 Basic linear mixed models

We would like to quantify the difference between human skeletal stem cells (SSC) and the human osteosarcoma cell line MG-63 (which is often used as a model system for SSCs) using a likelihood ratio test based on LMM.

Please load `this` session into Shape-Out (via *File* | *Open Session*). The experimental data are accessed from DCOR, so you will need a working internet connection. The session contains five datasets:

- `SSC_16uls_rep1_20150611.rtdc` (SSC repetition 1)
- `SSC_16uls_rep2_20150611.rtdc` (SSC repetition 2)
- `MG63_pure_16uls_rep1_20150421.rtdc` (MG-63 repetition 1)
- `MG63_pure_16uls_rep2_20150422.rtdc` (MG-63 repetition 2)
- `MG63_pure_16uls_rep3_20150422.rtdc` (MG-63 repetition 3)

Note: The data sets are ordered according to run index. In an ideal case, the run index would resemble the repetition of an experiment. Here, however, the run index is only an internal lab book reference.

In this example, we treat SSC as our “treatment” and MG-63 as our “control”. These are just group names that remind us that we are comparing one type of sample against another type.

Note that the settings for Young’s modulus computation have already been defined and that the datasets are already filtered with these box filters:

- Porosity (*area_ratio*): 0 to 1.05
- Area [μm^2] (*area_um*): 120 to 550
- Deformation (*deform*): 0 to 0.1

To perform an LMM analysis, go to *Compute* | *Statistical significance* and set the groups (SSC: treatment; MG63: control) and repetitions (enumeration by date-time).

Compute the statistical significance using linear mixed-effects models

Model: ☒ lmer ☐ glmer+loglink

Feature: Deformation

Datasets:

<input checked="" type="checkbox"/> SSC 16uls rep1	≡	treatment	rep. 1
<input checked="" type="checkbox"/> SSC 16uls rep2	≡	treatment	rep. 2
<input checked="" type="checkbox"/> MG63 pure 16uls rep1	≡	control	rep. 1
<input checked="" type="checkbox"/> MG63 pure 16uls rep2	≡	control	rep. 2
<input checked="" type="checkbox"/> MG63 pure 16uls rep3	≡	control	rep. 3

Help Run R-lme4 Close

Make sure that the feature “Deformation” is selected and hit *Run R-lme4*. The results of the LMM analysis are shown in a new dialog.

Parameters		Results	
Model	lmer	Model converged	Yes
Feature	Deformation	Anova p-value	0.012558
Differential	No	Fixed effect intercept	0.031928
		Fixed effect treatment	-0.0013548

Model summary

Linear mixed model fit by REML ['lmerMod']
Formula: feature ~ group + (1 + group | repetition)
REML criterion at convergence: -34724,9

Scaled residuals:
Min 1Q Median 3Q Max
-2,0760 -0,7148 -0,1546 0,5299 5,3384

Random effects:

Groups	Name	Variance	Std.Dev.	Corr
repetition	(Intercept)	3,024e-15	5,500e-08	
	grouptreatment	8,983e-14	2,997e-07	-1,00
Residual		1,592e-04	1,262e-02	

Number of obs: 5883, groups: repetition, 3

Fixed effects:

	Estimate	Std. Error	t value
(Intercept)	0.0319279	0.0002052	155.583

The most important numbers are extracted from the report and are shown at the top:

- **Fixed effect intercept:** The mean of the parameter chosen for all controls.
- **Fixed effect treatment:** The effect size of the parameter chosen between the mean of all controls and the mean of all treatments.
- **Anova p-value:** The p-value of the ANOVA test.

In the report, you will also find the **Full coefficient table**, which shows the effect size of the parameter chosen between control and treatment for every single experiment.

We are interested in the p-value, which is 0.01256 for Deformation. We repeat the analysis with Area (0.0002183) and Young's modulus (0.0002777). The p-values indicate that MG-63 (mean elastic modulus 1.26 kPa) cells are softer than SSCs (mean elastic modulus 1.54 kPa) [HMMO18].

4.5.2 LMM analysis of differential deformation

To check whether the deformation we see is not just an inherent deformation (visible in the reservoir data), we would like to perform a differential feature analysis.

Please load [this session](#) into Shape-Out (via *File | Open Session*). The experimental data are accessed from DCOR, so you will need a working internet connection. The session contains ten datasets (reservoir measurements in addition to the measurements above).

As in the example above, go to *Compute | Statistical significance* and set the groups and repetitions.

Compute the statistical significance using linear mixed-effects models

Model: ☒ lmer ☐ glmer+loglink

Feature: Deformation

Datasets:

<input checked="" type="checkbox"/> SSC 16uls rep1	≡	treatment	rep. 1
<input checked="" type="checkbox"/> SSC 16uls rep2	≡	treatment	rep. 2
<input checked="" type="checkbox"/> SSC reservoir rep1	≡	treatment	rep. 1
<input checked="" type="checkbox"/> SSC reservoir rep2	≡	treatment	rep. 2
<input checked="" type="checkbox"/> MG63 pure 16uls rep1	≡	control	rep. 1
<input checked="" type="checkbox"/> MG63 pure 16uls rep2	≡	control	rep. 2
<input checked="" type="checkbox"/> MG63 pure 16uls rep3	≡	control	rep. 3
<input checked="" type="checkbox"/> MG63 pure reservoir rep1	≡	control	rep. 1
<input checked="" type="checkbox"/> MG63 pure reservoir rep2	≡	control	rep. 2
<input checked="" type="checkbox"/> MG63 pure reservoir rep3	≡	control	rep. 3

Help
Run R-lme4
Close

The results of the LMM analysis for differential deformation are:

Parameters		Results	
Model	lmer	Model converged	Yes
Feature	Deformation	Anova p-value	0.0000035055
Differential	Yes	Fixed effect intercept	0.020509
		Fixed effect treatment	-0.0052991

Model summary

Linear mixed model fit by REML ['lmerMod']
Formula: feature ~ group + (1 + group | repetition)
REML criterion at convergence: -59591,1

Scaled residuals:
Min 1Q Median 3Q Max
-6,5206 -0,5391 0,0077 0,5700 6,3890

Random effects:
Groups Name Variance Std.Dev. Corr
repetition (Intercept) 2,938e-07 0,0005421
group.treatment 1,273e-06 0,0011283 -1,00
Residual 3,862e-07 0,0006215
Number of obs: 5000, groups: repetition, 3

Fixed effects:
Estimate Std. Error t value
(Intercept) 0.0205095 0.0003132 65.492

Save report (.txt) Close

The p-value for the differential deformation is magnitudes lower than the p-value for the (non-differential) deformation in the previous example. This indicates that there is a non-negligible initial deformation of the cells in the reservoir.

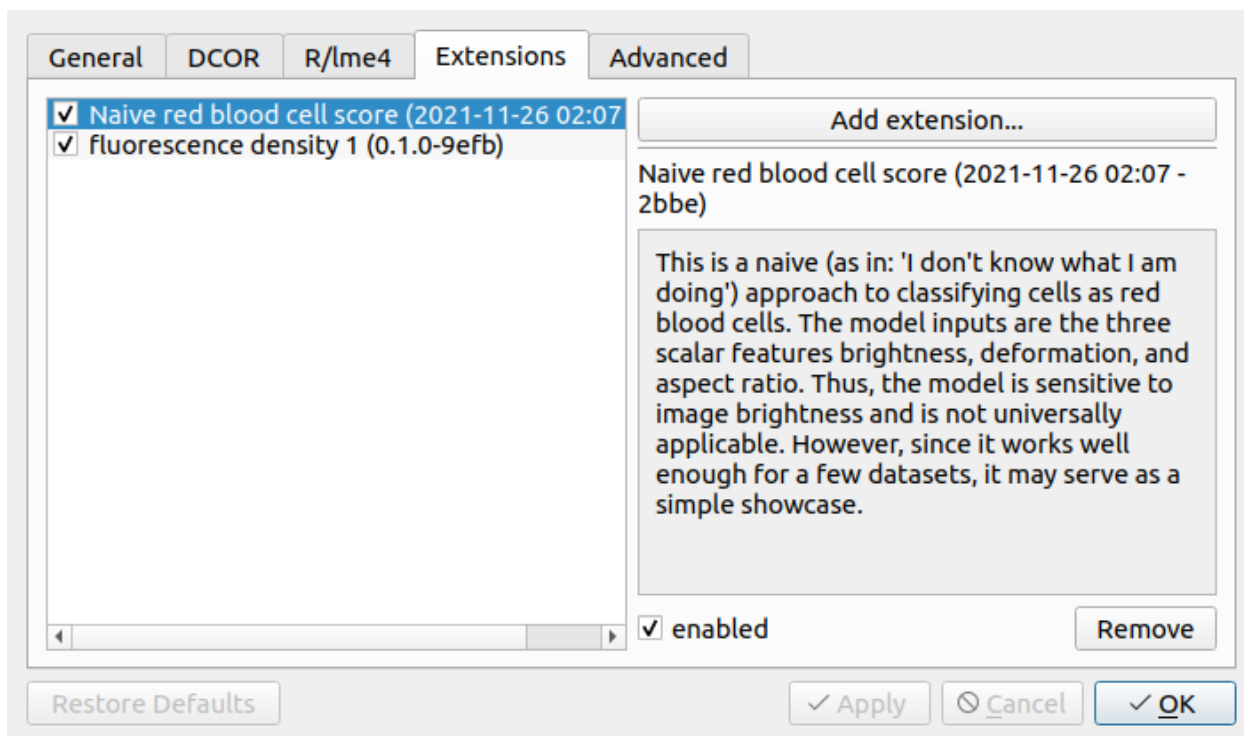
4.6 Loading Extensions (machine-learning and plugin features)

Since version 2.9.0, Shape-Out 2 allows loading dclab [plugin features](#) and [machine-learning features](#). You may need those if you need to quantify anything that is not covered by the [default features](#).

Note: If you installed Shape-Out via installer (not via *pip*), then many extensions might not work due to software dependencies that those extensions might have. If this happens, please create an issue in the Shape-Out 2 repository so we can find a solution.

Warning: Extensions can be harmful. Please only load extensions that you received first-hand from people you trust.

You can load and manage extensions via the *Edit | Preferences* dialog in the *Extensions* tab.



4.6.1 Example: Fluorescence density

Download the `extension_fl1_density.py` extension and add it to Shape-Out. You will see a new scalar feature named “FL-1 density [a.u.]” that quantifies the collected fluorescence signal per object volume for the fluorescence channel 1. Using this extension as a template, you could create the density features for the other fluorescence channels as well.

4.6.2 Example: RBC-detection with machine-learning

Note: For this example you will need to have tensorflow installed.

Download the `extension_naive_rbc_score.modc` extension and add it to Shape-Out. You will see a new scalar feature named “RBC score (naive)”. This showcase model only consists of one dense layer of size six, but already does a better-than-random job in identifying red blood cells.

4.7 Export DC data

Sometimes you would like to thin out the number of events or features in a dataset and export the result to a file. For instance, Shape-Out can export your DC data to the [flow cytometry standard](#) (.fcs) file format or to tab-separated values (.tsv) files for data analysis in other software. If you export to the .rtcd file format, you will stay in the DC ecosystem, allowing you to make use of dclab and Shape-Out or other software that can interface with HDF5 data.

If
you

Export filtered session data to other file formats
[Help](#)

Output directory:

Format:
☒ RT-DC (*.rtcd)
☐ FCS3.0 (*.fcs)
☐ tab-separated values (*.tsv)

Storage strategy:

Features

Chapter 4. Quick Guides

ex-
port
to
the
.rtdc
file
for-
mat,
you
have
sev-
eral
op-
tions
that
al-
low
you
to
fine-
tune
what
should
be
stored
in
the
out-
put
file:

Features

The .rtdc file format supports non-scalar feature data such as *image* and *trace*. Consequently, these features are only available in the list when you select the .rtdc file format. Note that the features that are selected by default are those that do not require any additional computation time before the export can take place. If you select ancillary features such as *volume*, the time required to perform the export will be longer.

Storage strategy

Since Shape-Out 2.16 and with the introduction of *basins* (which tell dclab/Shape-Out where to find features belonging to the same dataset in other locations) in dclab 0.58.0, you can select a storage strategy. The storage strategy defines whether features and/or basins are stored in the output file.

- No basins: This is the behavior in earlier versions of Shape-Out. Only the selected features are written to the .rtdc file. Use this option if you are certain that you do not want basins.
- With basins: This is the recommended choice for normal usages. The selected features are written to the output file and all available basins (including the original file) are stored in the output file. If you open such an exported file, all features from the original dataset are still available as long as the original file or the basins defined therein are reachable.
- Only basins: This option is useful if you have a very confined analysis pipeline and would like to avoid data redundancy. In the output file, there will be no feature data. The output file will only contain the basin information. Naturally, this will massively speed-up data export (less data written to disk, no ancillary features are computed, no basin features are retrieved from other sources). The downside is that if none of the basins are available, the exported files are useless. Make sure that the source files with which you are working are always available. You can achieve that by working with data on DCOR, by making sure that

disk
(Fig.
4.14).
Se-
lect
the
All
datasets
in
a
di-
rec-
tory
op-
tion
and
(op-

tionally) a filter ray from the current session that you would like to apply before computing the statistics.

Note that statistics may not be available for all selected features in all datasets. In such a case, statistics are exported as *nan* values in the resulting .tsv file.

CHANGELOG

List of changes in-between Shape-Out releases.

5.1 version 2.16.0

- feat: enable storage strategy (basin control) in export dialog (#159)
- fix: ask for .tsv output path before computing statistics
- enh: color feature data in QuickView combobox according to availability
- enh: hide basinmap features in scatter plot selections (#159)
- docs: remove reference to Shape-Out 1 in introduction
- docs: mention basins and link to dclab (#159)
- docs: add quick guide for data export
- ref: reduce usage of *dclab.dfn.scalar_feature_names* (#108)
- setup: bump dclab to 0.58.2

5.2 version 2.15.5

- fix: right-click menu not working for plot widgets (#160)
- ref: introduce *FeatureComboBox* class for listing features

5.3 version 2.15.4

- fix: very small numbers not parsed when showing metadata (#158)
- fix: do not allow question mark “?” in exported file names (#156)
- fix: do not override files when exporting data (#153)
- fix: remove the “so2exp” prefix when exporting data (#157)

5.4 version 2.15.3

- build: PyInstaller to rebuild its bootloader (avoid false positive malware detection)

5.5 version 2.15.2

- fix: handle zero-valued contour spacing
- setup: bump dclab to 0.57.4 (handle zero-valued spacing for KDE contour)

5.6 version 2.15.1

- fix: statistics not updating when changing plot axes (#154)
- setup: bump dclab from 0.57.0 to 0.57.1

5.7 version 2.15.0

- enh: avoid creating hierarchy when no filters are applied (speed)
- enh: cache computed statistics
- ref: avoid division-by-zero warning
- setup: bump dclab from 0.56.3 to 0.57.0 (speed)

5.8 version 2.14.3

- fix: intermediate plotting of first event whenever a slot is added
- fix: catch zero-division warning when plotting empty image
- enh: remember selected events in QuickView
- enh: avoid showing first dataset event when user clicks in QuickView
- setup: bump dclab from 0.55.7 to 0.56.3 (enhanced basin support)

5.9 version 2.14.2

- setup: bump dclab from 0.55.6 to 0.55.7

5.10 version 2.14.1

- fix: perform sanity check for contour spacing before plotting
- fix: use pyqtgraph.SpinBox to edit box filters (#149)
- enh: minor optimization of min/max feature algorithm
- enh: only preselect innate features when computing statistics (#150)
- setup: bump dclab to 0.55.6 (new scalar features, dcor access)
- setup: bump pyqtgraph from 0.12.4 to 0.13.3

5.11 version 2.14.0

- ref: don't set RTDCBase.identifier to slot identifier
- setup: drop support for Python 3.8
- setup: bump dclab from 0.54.2 to 0.55.4 (better DCOR support)
- build: use Python 3.10 for building executables

5.12 version 2.13.7

- ci: fix rtd build pipeline
- setup: bump dclab from 0.52.0 to 0.54.2 (improved basin support)

5.13 version 2.13.6

- ci: fix Windows build pipeline

5.14 version 2.13.5

- setup: bump requests to 2.31.0 (CVE-2023-32681)
- setup: bump scipy to 1.10.0 (CVE-2023-25399)
- setup: bump dclab from 0.50.4 to 0.52.0

5.15 version 2.13.4

- tests: fix fake dataset creation

5.16 version 2.13.3

- fix: casting error when using integer feature for plot color
- fix: also export logs and tables to .rtdc with prefix “so2exp_”
- enh: minor minimization in waiting times
- ref: unify json dumps when saving sessions
- setup: bump dclab from 0.48.4 to 0.50.4

5.17 version 2.13.2

- docs: don’t build PDF on rtd (failed)
- setup: bump dclab from 0.48.2 to 0.48.4 (don’t load invalid inertia ratio data from existing HDF5 files)

5.18 version 2.13.1

- setup: bump dclab from 0.48.1 to 0.48.2 (improved speed, fixed bug with inertia ratio in long channels)

5.19 version 2.13.0

- feat: support new viscosity model [buyukurganci-2022 \(#136\)](#)
- enh: increase speed of QuickView event visualization
- enh: turn on auto-apply in QuickView by default
- setup: bump dclab from 0.47.2 to 0.48.1

5.20 version 2.12.0

- feat: allow to disable KDE or use feature data as marker hue in QuickView
- fix: do not perform auto-apply when changing downsampling value and downsampling is disabled in QuickView
- fix: catch IndexError when trying to view an event that is not there anymore in polygon-selection-mode in QuickView
- enh: make auto-apply in QuickView plot settings optional
- docs: update screenshot scripts

5.21 version 2.11.11

- enh: strip http(s):// from DCOR server string in settings
- enh: improve GUI of QuickView (#133, #43)
- setup: bump dclab from 0.47.0 to 0.47.2

5.22 version 2.11.10

- fix: detect chaged files on disk when reloading metadata
- setup: bump dclab from 0.46.4 to 0.47.0 (new bg_med feature and other convenience methods)

5.23 version 2.11.9

- fix: include logs when exporting data (#126)
- setup: bump dclab from 0.46.2 to 0.46.4 (new features)

5.24 version 2.11.8

- setup: bump dclab from 0.45.0 to 0.46.2 (#132)
- build: pin pyinstaller version to 5.3
- ref: use *hashobj* from upstream dclab (#132)

5.25 version 2.11.7

- build: fix build pipelines

5.26 version 2.11.6

- setup: bump dclab from 0.43.0 to 0.45.0 (scalar feature support)

5.27 version 2.11.5

- build: use InnoSetup “autopf” feature for installation directory

5.28 version 2.11.4

- enh: preselect only innate features in data export to reduce computation time
- docs: minor improvements
- setup: bump dclab from 0.42.2 to 0.43.0 (improved compression)
- setup: include zstandard library in distribution installer

5.29 version 2.11.3

- setup: bump dclab from 0.42.1 to 0.42.2 (lazy-load .rtdc data which increases initial opening times)
- setup: bump pyqtgraph from 0.12.3 to 0.12.4

5.30 version 2.11.2

- setup: bump dclab from 0.42.0 to 0.42.1 (support background image access from DCOR)

5.31 version 2.11.1

- fix: allow to specify 0.5 increments when filtering integer features (#123)
- setup: bump dclab from 0.41.0 to 0.42.0

5.32 version 2.11.0

- feat: allow to load encrypted dcor access tokens (#122)
- setup: bump dclab from 0.39.17 to 0.41.0
- setup: bump scipy to 1.8.0
- build: bump Python version to 3.9

5.33 version 2.10.0

- feat: export filter ray for each dataset via shortcut (#119)
- setup: bump dclab from 0.39.15 to 0.39.17 (#118)

5.34 version 2.9.6

- fix: extensions not loaded during startup on Windows (#117)

5.35 version 2.9.5

- fix: polygon translation via drag-n-drop in polygon edit mode was not taken into account (#115)
- enh: add (de-)select all button for lists in ComputeStatistics (#116)
- enh: convert all selectable lists in dialogs to new BulkList class
- setup: bump dclab from 0.39.13 to 0.39.15

5.36 version 2.9.4

- enh: display session file name in window title
- setup: drop support for older numpy versions
- setup: bump dclab from 0.39.9 to 0.39.13 (fix visualization of the “ml_class” score when the ml_score features contain nans)

5.37 version 2.9.3

- fix: implement closeEvent in main and ask user before exiting
- fix: fix possible failure during update check
- fix: show a message box when the R version is incompatible (#114)
- ref: only reload R/lme4 information in preferences when the corresponding tab is selected to avoid preferences lock-up (#114)
- tests: use hidden settings variable to skip asking the user to clear the session
- setup: bump dclab from 0.39.5 to 0.39.9

5.38 version 2.9.2

- setup: bump dclab from 0.39.3 to 0.39.5 (fix opening files with some online filter settings)

5.39 version 2.9.1

- enh: add button “Find best spacing” in Plot tab in Analysis View that iteratively finds sane spacing values (#110)
- enh: notify user in plot if contour spacing is too large (#110)
- enh: add action to remove all datasets from a session (#97)
- fix: mysterious behavior of subclassed `pg.ColorBarItem` (#109)
- setup: bump dclab from 0.39.1 to 0.39.3 (increased verbosity, renamed feature labels, refactored DCOR access)

5.40 version 2.9.0

- feat: add support for extensions in the form of loading dclab plugin and machine-learning features (#85)
- setup: drop support for Python 3.7
- setup: bump dclab from 0.37.2 to 0.39.1

5.41 version 2.8.1

- fix: wrong scale for viscosity in bulk emodulus computation (#104)
- fix: save unused polygon filters in sessions (#101)
- fix: allow to delete polygon filters (#100)
- setup: bump dclab from 0.37.0 to 0.37.2 (enhanced speed for operations involving contour computation)

5.42 version 2.8.0

- **BREAKING CHANGE:** The volume feature in all previous versions was overestimated by about $2\mu\text{m}^3$. Please re-run your analysis pipeline.
- setup: bump pyqtgraph from 0.12.2 to 0.12.3
- setup: bump dclab from 0.36.1 to 0.37.0 (faulty volume computation)

5.43 version 2.7.4

- setup: bump dclab from 0.35.6 to 0.36.1 (improved export speed)

5.44 version 2.7.3

- build: remove console window (#102)

5.45 version 2.7.2

- setup: bump dclab from 0.35.4 to 0.35.6 (Young's modulus could not be computed in some cases)

5.46 version 2.7.1

- enh: display online polygon filters in metadata tab (#94)
- enh: show user configuration section in metadata tab (#86)
- setup: bump dclab from 0.34.3 to 0.35.4
- tests: change test data to avoid warnings in dclab 0.35.0

5.47 version 2.7.0

- feat: accept DCOR drag events from DCOR-Aid data browser

5.48 version 2.6.9

- fix: don't reset color and name of dataset during duplicate matrix action (#96)

5.49 version 2.6.8

- fix: adapt color scheme to work in dark mode (#92)

5.50 version 2.6.7

- fix: correctly handle missing features on data export (#80)
- ref: cleanup (default arguments and PyQt5 object references)
- setup: bump dclab from 0.34.2 to 0.34.3 (set R_HOME)
- build: bump rpy2 from 3.4.2 to 3.4.5
- build: bump pyqtgraph from 0.12.1 to 0.12.2 and remove colorbar export workarounds

5.51 version 2.6.6

- fix: false alarms about wrong pyqtgraph version on startup (removed the responsible code, because there are now more regular releases of pyqtgraph)
- enh: allow passing session files, datasets, and filters via the command line (#88)
- enh: associate the .so2 file format with Shape-Out on Windows (#88)
- build: migrate to Inno Setup 6
- ref: avoid pyqtgraph DeprecationWarning due to *translate*

5.52 version 2.6.5

- fix: migrate to pg.ColorBarItem (with some manual patches from upstream) to resolve issues with SVG export (#87)
- fix: units of viscosity is mPa*s (#91)
- setup: bump pyqtgraph from 0.12.0 to 0.12.1
- setup: bump dclab from 0.33.3 to 0.34.2
- ci: fix build issues for macOS

5.53 version 2.6.4

- fix: HTML-escape plot titles and axis labels (#82)

5.54 version 2.6.3

- build: pin rpy2 to 3.4.2 on Windows (#84)

5.55 version 2.6.2

- setup: migrate to pyqtgraph 0.12.0
- setup: bump dclab from 0.33.1 to 0.33.3
- docs: fix rtd build

5.56 version 2.6.1

- setup: remove deprecated setup.py test
- setup: bump dclab to 0.33.1 (filters were ignored when exporting trace data to hdf5, see <https://github.com/DC-analysis/DCKit/issues/17>)

5.57 version 2.6.0

- feat: add background correction in quickview (#54)
- fix: workaround for different plot widths due to title label (#33)

5.58 version 2.5.2

- build: add pyinstaller hook for pyqtgraph

5.59 version 2.5.1

- fix: preferences dialog did not open in macOS App bundle (#76)
- enh: disable R settings in preferences dialog if rpy2 is missing
- build: bump dclab from 0.29.1 to 0.32.4 (this should have happened in the 2.5.0 release which introduced R-lme4 analysis)
- build: bump pyqtgraph to commit c1900 (post 0.11.1) which mainly improves plot export (#59)
- tests: introduce manual tests that require a human in “tests-manual”
- ref: key [calculation]: “emodulus model” is deprecated in dclab
- ref: use “lut_identifier” instead of deprecated “method” keyword when retrieving isoelasticity lines

5.60 version 2.5.0

- feat: implement linear-mixed effects models with R/lme4 (#55)
- ci: overhauled build process

5.61 version 2.4.15

- ci: fix rtd build
- fix: typo in infobox in analysis view (#69)
- fix: macOS builds did not use our pyqtgraph fork (reported in #70)

5.62 version 2.4.14

- maintenance release

5.63 version 2.4.13

- maintenance release

5.64 version 2.4.12

- maintenance release

5.65 version 2.4.11

- maintenance release

5.66 version 2.4.10

- maintenance release

5.67 version 2.4.9

- maintenance release

5.68 version 2.4.8

- maintenance release

5.69 version 2.4.7

- maintenance release

5.70 version 2.4.6

- maintenance release

5.71 version 2.4.5

- maintenance release

5.72 version 2.4.4

- fix: box filters selections bled to other filters (#67)
- build: do not use development version of dclab
- ci: move to GitHub Actions

5.73 version 2.4.3

- enh: improve UI (tooltips, icons)
- build: Windows build won't start due to breaking change in Windows ucrtbase.dll (#64)
- build: Migrate Windows build to PyInstaller 4.1

5.74 version 2.4.2

- fix: a regression introduced during refactoring in 2.4.0 made it impossible to select the temperature for known media
- fix: allow to reorder the dataset list (#46)
- enh: iconify buttons at top of Analysis View

5.75 version 2.4.1

- fix: strip white-space characters from line edits in the preferences to avoid line breaks introduced in the API key via copy-paste
- fix: not possible to create plots for datasets without the bright_avg feature; added a check for feature availability before updating the interface (#62)

5.76 version 2.4.0

- feat: allow to set Young’s modulus parameters for all open datasets via the “Bulk action” menu (#60)
- fix: force temperature for Young’s modulus computation to the value stored in the dataset for the “config” scenario
- enh: update menu keyboard shortcuts

5.77 version 2.3.0

- enh: added preferences dialog
- enh: improved user experience for searching DCOR data
- ref: migrate settings to QSettings
- setup: remove appdirs dependency, because we let QSettings determine where to store settings

5.78 version 2.2.6

- fix: support user-defined media introduced in dclab 0.29.1 (#53)
- fix: porosity box filter precision at lower limit (#58)
- docs: update bibliography
- bump dclab from 0.29.0 to 0.29.1

5.79 version 2.2.5

- setup: correct installation directory on Windows
- setup: bump dclab from 0.27.11 to 0.29.0
- fix: main window not focused after startup (#52)

5.80 version 2.2.4

- fix: UI slot issues (probably a racing condition) in the analysis view; editing the viscosity for “other” medium not possible on frozen Windows and macOS application (#49)

5.81 version 2.2.3

- fix: update Quick View plot when values for the Young’s modulus computation are changed (#44)
- fix: use fixed point size in Block Matrix
- enh: improve plot matrix column/row visualization and show flow rate (#45)
- docs: update visualization of Young’s modulus look-up tables using new figure script from dclab
- build: bump Python to 3.8 for Windows builds

- setup: bump dclab from 0.27.5 to 0.27.11 (improvement of hierarchy child handling)

5.82 version 2.2.2

- fix: correct box filter ranges when feature contains inf values
- enh: add pretty tool icons from KDE breeze theme

5.83 version 2.2.1

- fix: zero-division error when setting “one plot per dataset” for an empty plot (#41)
- build: pin PyQt5 to 5.14.2 on Linux/macOS

5.84 version 2.2.0

- setup: bump dclab from 0.26.2 to 0.27.5 (support for machine learning features)
- fix: modify the GUI to enable box filtering for ml_score_??? features
- ref: pipeline.get_features now only returns features that are available (previously all features were returned when no datasets were in the pipeline)

5.85 version 2.1.6

- fix: export file names were allowed to have invalid characters
- fix: Quick View showed filtered events that were not plotted (statistics were computed correctly though)
- fix: Quick View was not very informative when all events were filtered away - a message is now shown
- setup: bump dclab from 0.26.1 to 0.26.2 (fix bin num computation using Doane’s formula)

5.86 version 2.1.5

- fix: marker hue feature data min/max was always computed even if not selected; for datasets without bright_avg (standard hue) this resulted in long waiting times
- fix: avoid pyqtgraph error messages in pipeline plots by disabling hovering events (not used anyway)
- fix: plot export did not work for single plots
- fix: exported event images sometimes had wrong contrast

5.87 version 2.1.4

- enh: add busy cursors wherever it seems fitting
- setup: bump dclab from 0.24.7 to 0.26.1 (volume-deformation isoelasticity lines, improved DCOR caching)

5.88 version 2.1.3

- fix: opening sessions did not work due to missing slot decorator
- fix: in some cases the temperature/viscosity setting was not correctly written to the UI for individual slots when switching between slots with fundamentally different settings (e.g. channel and reservoir)
- fix: KeyError when switching between slots with different temperature options
- setup: bump dclab from 0.23.0 to 0.24.7 (equidistant isoelastics, faster polygon filtering, crosstalk correction failed due to improper configuration update since Shape-Out 2.1.1)

5.89 version 2.1.2

- fix: ValueError when trying to compute contour spacing, because no datasets are selected for a plot
- fix: coloring scatter plot by feature did not work when the feature contains nan values
- fix: search path in session should not be filename but its directory
- setup: bump dclab from 0.22.5 to 0.23.0 (possible HDF5 export issue)

5.90 version 2.1.1

- fix: include private datasets when searching with DCOR API Key
- fix: remove UI option to compute Young's modulus for reservoir data (new "emodulus enabled" key in pipeline slot)
- fix: *Pipeline* object not returned by *session.open_session*
- setup: bump dclab from 0.22.1 to 0.22.5 (improve contour retrieval for mask images with artefacts, disable computation of Young's modulus for reservoir measurements)

5.91 version 2.1.0

- feat: basic DCOR support
- fix: improved session support (older pre-release sessions)
- docs: add DCOR quick guide
- enh: export event image via context menu in Quick View (#35)
- setup: bump dclab from 0.21.1 to 0.22.1 (DCOR support)

5.92 version 2.0.3

- setup: bump dclab from 0.20.3 to 0.21.1
- docs: add terminology section (#12)

5.93 version 2.0.2

- fix: IndexError when removing a plot (#36)
- fix: ValueError when filtering all events in Quick View (#37)
- fix: TypeError when removing datasets and opening Quick View (#38)
- fix: RuntimeError when removing datasets and opening Quick View (#38)
- fix: ValueError when removing activated datasets and opening Quick View

5.94 version 2.0.1

- fix: correctly distinguish prereleases when checking for new versions
- enh: allow loading data via drag&drop

5.95 version 2.0.0

- initial release

BILBLIOGRAPHY

IMPRINT/IMPRESSUM

7.1 Imprint and disclaimer

For more information, please refer to the imprint and disclaimer (Impressum und Haftungsausschluss) at <https://www.zellmechanik.com/Imprint.html>.

7.2 Privacy policy

This documentation is hosted on <https://readthedocs.org/> whose [privacy policy](#) applies.

INDICES AND TABLES

- `genindex`
- `modindex`
- `search`

BIBLIOGRAPHY

- [BBN+23] Beyza Büyükgüngör, Santanu Kumar Basu, Markus Neuner, Jochen Guck, Andreas Wierschem, and Felix Reichel. Shear rheology of methyl cellulose based solutions for cell mechanical measurements at high shear rates. *Soft Matter*, pages –, 2023. doi:10.1039/D2SM01515C.
- [HWT02] David Halpern, Howard B. Wilson, and Louis H. Turcotte. Gauss integration with geometric property applications. In *Advanced Mathematics and Mechanics Applications Using MATLAB, Third Edition*. Chapman & Hall, sep 2002. doi:10.1201/9781420035445.ch5.
- [HMMO18] M. Herbig, A. Mietke, P. Müller, and O. Otto. Statistics for real-time deformability cytometry: Clustering, dimensionality reduction, and significance testing. *Biomechanics*, 12(4):042214, 2018. doi:10.1063/1.5027197.
- [Her17] Christoph Herold. Mapping of Deformation to Apparent Young's Modulus in Real-Time Deformability Cytometry. *ArXiv e-prints 1704.00572 [cond-mat.soft]*, 2017. arXiv:1704.00572v1.
- [MOG+15] Alexander Mietke, Oliver Otto, Salvatore Girardo, Philipp Rosendahl, Anna Taubenberger, Stefan Golfier, Elke Ulbricht, Sebastian Aland, Jochen Guck, and Elisabeth Fischer-Friedrich. Extracting Cell Stiffness from Real-Time Deformability Cytometry: Theory and Experiment. *Biophysical Journal*, 109(10):2023–2036, nov 2015. doi:10.1016/j.bpj.2015.09.006.
- [MMM+17] M. Mokbel, D. Mokbel, A. Mietke, N. Träber, S. Girardo, O. Otto, J. Guck, and S. Aland. Numerical Simulation of Real-Time Deformability Cytometry To Extract Cell Mechanical Properties. *ACS Biomaterials Science & Engineering*, 3(11):2962–2973, jan 2017. doi:10.1021/acsbiomaterials.6b00558.
- [NUH+20] Ahmad Ahsan Nawaz, Marta Urbanska, Maik Herbig, Martin Nötzel, Martin Kräter, Philipp Rosendahl, Christoph Herold, Nicole Toepfner, Marketa Kubankova, Ruchi Goswami, Shada Abuhattum, Felix Reichel, Paul Müller, Anna Taubenberger, Salvatore Girardo, Angela Jacobi, and Jochen Guck. Intelligent image-based deformation-assisted cell sorting with molecular specificity. *Nature Methods*, 2020. doi:10.1101/862227.
- [NUH+19] Ahmad Ahsan Nawaz, Marta Urbanska, Maik Herbig, Martin Nötzel, Martin Kräter, Philipp Rosendahl, Christoph Herold, Nicole Töpfner, Marketa Kubankova, Ruchi Goswami, and et al. Sorting real-time fluorescence and deformability cytometry (sort-fdc) - manuscript data. Dec 2019. doi:10.6084/m9.figshare.11302595.v1.
- [ORM+15] Oliver Otto, Philipp Rosendahl, Alexander Mietke, Stefan Golfier, Christoph Herold, Daniel Klaue, Salvatore Girardo, Stefano Pagliara, Andrew Ekpenyong, Angela Jacobi, Manja Wobus, Nicole Töpfner, Ulrich F Keyser, Jörg Mansfeld, Elisabeth Fischer-Friedrich, and Jochen Guck. Real-time deformability cytometry: on-the-fly cell mechanical phenotyping. *Nature Methods*, 12(3):199–202, feb 2015. doi:10.1038/nmeth.3281.
- [RPJ+18] Philipp Rosendahl, Katarzyna Plak, Angela Jacobi, Martin Kraeter, Nicole Toepfner, Oliver Otto, Christoph Herold, Maria Winzi, Maik Herbig, Yan Ge, Salvatore Girardo, Katrin Wagner, Buzz Baum, and Jochen

- Guck. Real-time fluorescence and deformability cytometry. *Nature Methods*, 15(5):355–358, apr 2018. doi:[10.1038/nmeth.4639](https://doi.org/10.1038/nmeth.4639).
- [THO+17] Nicole Toepfner, Christoph Herold, Oliver Otto, Philipp Rosendahl, Angela Jacobi, Martin Krater, Julia Stachele, Leonhard Menschner, Maik Herbig, Laura Ciuffreda, Lisa Ranford-Cartwright, Michal Grzybek, Unal Coskun, Elisabeth Reithuber, Genevieve Garriss, Peter Mellroth, Birgitta Henriques-Normark, Nicola Tregay, Meinolf Suttrop, Martin Bornhauser, Edwin R. Chilvers, Reinhard Berner, and Jochen Guck. Detection of human disease conditions by single-cell morpho-rheological phenotyping of whole blood. *eLife*, 7:e29213, jun 2017. doi:[10.1101/145078](https://doi.org/10.1101/145078).
- [XRM+20] Miguel Xavier, Philipp Rosendahl, Paul Müller, Maik Herbig, and Jochen Guck. Real-time deformability cytometry data of primary human skeletal stem cells and the human osteosarcoma cell line mg-63. Feb 2020. doi:[10.6084/m9.figshare.11662773.v2](https://doi.org/10.6084/m9.figshare.11662773.v2).